



Supplemental information for The April 21-23 Chisholm Trail Historic Road Races @ Eagles Canyon

All,

We are looking forward to our upcoming race at ECR and wanted to make sure that everyone had all the information they needed:

- **Safety**

- Please make sure that no unsupervised minors drive scooter, golf carts or other motorized vehicles around the paddock area. ECR has had some close calls and incidents on some recent events and want to make sure we do not have any problems.
- The speed limit in the paddock and false grid areas is 7 MPH.
- ECR has come under pressure from its insurance carrier regarding the direction of travel in the paddock and entering/exiting the race track. All participants must follow the direction arrows when entering or exiting the racetrack.

- **Track Access/Paddock Parking**

The ECR Paddock has been Improved and it is currently undergoing more improvements. There has been more concrete poured in the mid and upper paddock areas around the member garages. However, some of the Lower Paddock is under construction for a new Skid Pad, so a few of you who were used to parking in the lower paddock are encouraged to look at the attached map and find your new favorite "improved" parking spot further up the hill. SEE ATTACHED MAP.

- The front gate will be closed until 3:00PM on Thursday April 20th and there will be NO Entry. Safety concerns will not allow any staging or parking on FM 51 or the Track driveway entrance area. **Please do not arrive before 3:00PM.**
- Several multi-car teams with large trailers (Speedstar, Bigger Hammer, and Barron) will be given paddock entry at 1:30PM as they each have assigned spaces.
- **Paddock Marshalls will direct field parking and release to the paddock area.**
- We will have multiple parties to sign waivers and provide wrist bands.
 - Once you reach the appropriate paddock area you will be directed by another Paddock Marshall to park in the furthestmost available parking space
 - **There will be no saving spaces for other parties.** If you would like to pit next to or with a group of entrants, then you must wait for all parties to arrive and then go to your paddock location.
 - The track will be closed at 10:00PM and will reopen at 6:00AM on Friday, Saturday, and Sunday.

- **Track Damage Insurance**

- CVAR is offering Track Damage Insurance for all our members attending the ECR event. PLEASE GET THE INSURANCE! Our mistake, it should have been mandatory at registration.
- Each race entrant should purchase Track Damage Insurance for a one-time fee of \$50.00.
- The coverage would provide that person with coverage, provided by CVAR, for any damage to the ECR facility (oil spills, barriers, etc.) over the race weekend up to \$2,000. Any damage to the facility beyond the \$2,000 limit would be the responsibility of the individual.
- Anyone who damages ECR and does not have the Track Damage Insurance would be expected to pay the full amount of any damages assessed to them.
- The responsibility to pay for damages, beyond any insurance coverage, would be communicated as the obligation of “ladies and gentlemen” to be responsible for their behavior.
- There is a link on Motorsport Reg where any race entrant can purchase the Track Damage Insurance. We may allow individuals to purchase insurance at the event, but we would prefer not to have that additional burden at the track.
- The Board feels that some flexibility needs to be dialed into CVAR’s handling these expenses. Neither CVAR nor ECR are looking for “nickel and dime” reimbursements from our members. The purpose of the insurance and the policy of responsibility is to avoid substantial disruptions that affect the profitability of a race weekend. After further internal discussions in conjunction with ECR we have come up with a form to help connect incidents with expenses and responsibility.
- In summary, we think this approach provides a fair approach to limit financial exposure to our entrants along with providing CVAR with reasonable financial protection.
- We included the Track Damage Form along with this information on the last page.

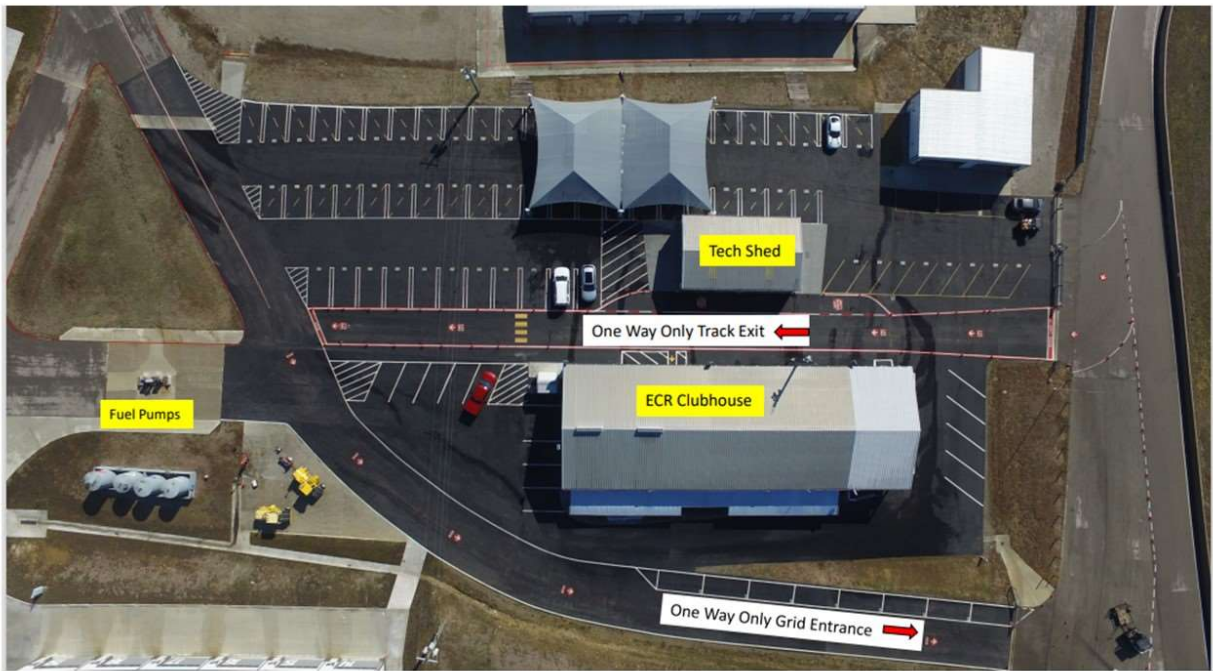
- **Showers at the Track**

- For those staying overnight at the track, the showers in the main Clubhouse Building will be open at 6:30AM and will remain open until 10:00PM on Thursday, Friday, and Saturday evenings
- The bathrooms and showers in the Middle Paddock are still under construction and will not be available for our use over this weekend.

- **Food Service at the Track**

- “Over the Top” Bar & Grill Hours of Operation
 - Friday – 11:00AM to 8:00PM “Happy Hour”/Dinner Menu starts at 4:00PM
 - Saturday – 11:00AM to 8:00PM “Happy Hour”/Dinner Menu starts at 4:00PM
 - Sunday – 11:00AM to 4:00PM
- All transactions will be card only, no cash.
- To be clear, there will no service for breakfast on the premises at ECR over the weekend.

- During the lunch break, all corner workers will be able to get to the front of the line for lunch.
 - Pre-orders for staff should be limited to the following options:
 - Cranberry Apple Chicken Salad
 - Caesar Salad Chicken or Shrimp
 - Chicken Bacon Ranch Wrap
 - Steak Wrap
 - For any questions or concerns about Food Service, feel free to contact:
Rebecca Kelly
Eagles Canyon Raceway
C: 860.462.6611
beccakelly@eaglescanyon.com
-
- **CVAR will not be hosting a official party on the weekend**
 - **Fuel at the Track**
 - 93 and 100 unleaded racing fuel and 110 leaded racing fuel will be available at the track.
 - **HAVE A GREAT TIME!!!!**





Incident No. _____

Track Damage/Cleanup/Repair Report

Date: _____

Track: _____

Session: T&T: Qualifying: Race:

Car #: _____ Color: _____ Group: _____

Driver: _____

CVAR Insurance: Y N

(Attached additional sheets if more than one car was involved.)

Description of Incident:

Description of Repair/Cleanup:

Cost of Repair/Cleanup: \$ _____

Driver's Insurance Coverage: \$ _____

Net amount to be billed to Driver: \$ _____