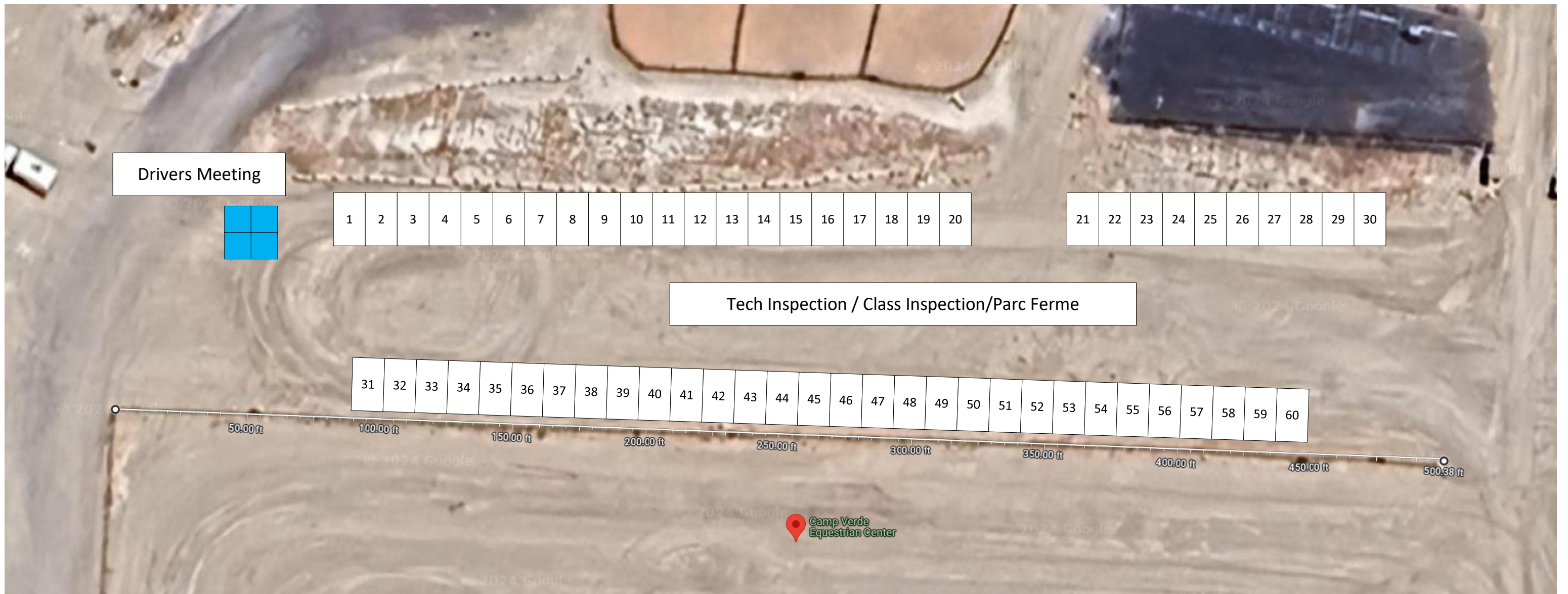


- After checking in at registration, proceed to your assigned pit location, unload your competition vehicle and park in your assigned tech inspection space.
- Hoods and trunks must be open for other competitors to view your vehicle.
- Competition vehicles must be in their assigned class inspection spot 30 minutes prior to the drivers meeting for your run group.
- To access the restrooms you will need to go through the animal pens. The gates should be open for you. Please leave any gate you go through in the same state as you found it.
- Please help us keep the restrooms and the rest of the facility cleaner than it was when we arrived. If there are any concerns, please contact Justin McBee or Sean Spring.





- Pit / Camping spaces are assigned.
- Fires are allowed when no county fire restrictions are in place.
- Fire pits must be contained and all ashes and wood must be taken with you when you leave.
- Please leave the space better than it was when you arrived.
- Tech Inspection spaces are assigned. Please use the same space for the entirety of the event for tech inspection, class inspection, and Parc Ferme.

