

"The Lone Star Grand Prix"
SCCA Hoosier Super Tour
February 5-6, 2022

Officials:

Race Chair	Robey Clark
Race Director	Mike West
Clerk of the Course	Kevin Coulter
Event Chief Steward	Jerry Wannarka
Series Admin.	Deanna Flanagan
Series Chief of Tech	Scott Schmidt
Series Timing	Bill Skibbe, Carol Reber
Series PR Manager	Reece White

Asst. Chief Stewards:

Operating: Lauri Shepard, Cathy Barnard
Chris Collins, Bob Neff

Track Limits Coordinator: Dave Foreman

Safety: Orval Brown

Tech: Bob Albert

Black Flag: TBD

Chairman SOM: Tom Brown

SOMs: Bev Heilicher, Karen Crider, Chuck Warren

Chief Scrutineer: Matthew Crotty

Chief Timing & Scoring: Diane Carter

Chief Starter: Bill Rowden

Chief of Control: Connie VanSchuyver

Chief F&C: Brent McNaul

Chief of Radios: Edgar Martinez

Chief Grid Marshal: Vince Hummer

Chief Pit Marshal: Nadja Pollard

Course Marshal: Ron Bashor

Paddock Marshal: Randy Smart

Pace Car: Dan Sherrod, Paul May

Sound Control: Doug Mains

Goodyear / Hoosier Tires:

(Please order tires in advance)

Sportscar Performance 817-265-5299

Race Equipment & Supplies:

Winding Road Racing, Austin, TX 512-994-0656

GOLF CART RENTALS: Contact KC Golf Cart Co.,
Andy Leiker at andy@kcgolfcartco.com

Hotel Accommodations:

<http://www.austintexas.org/visit/stay>

COTA RV Lot Rental:

Contact 512-655-6226



Held under the 2022 General Competition Rules
Sanction Number # 22-ST-56885

Chief Registrar: Rosa Lee Smart
2102 Cherry Hills Dr.
League City, TX 77573
smart99@me.com
281-334-5153
No Calls after 8pm CT

Online at: www.motorsportreg.com

Track Test Day: msreg.com/LSGP2022TEST

Race Entry: msreg.com/LSGP2022RACE

Volunteer Entry: msreg.com/LSGP2022VOL

SCCA Hotel Headquarters:

Hilton Garden Inn – (512) 386-7474

7610 John Glenn Way, Austin, TX 78741

\$99 King; \$109 Dbl. Queen

Michelle Gil: michelle.gil@hilton.com

Right Click to open Hyperlink:

[Sports Club Car of America \(hilton.com\)](http://Sports.Club.Car.of.America(hilton.com))

Fuels at the Track: 89 & 93 Unleaded Pump,

VP MS100 Unleaded, VP 110 & C12 Leaded

Special requests contact: Brad Horton

210-241-1192 or vphq@vpracingfuels.com

COTA has imposed a 103db sound restriction. Be prepared to comply with this rule.

Circuit of the Americas

3.41-mile Counter Clockwise Configuration



9201 Circuit of the Americas Blvd

Austin, TX 78617

Phone: 512-301-6600

Email: info@circuitoftheamericas.com

“The Lone Star Grand Prix”
SCCA Hoosier Super Tour
 February 5-6, 2022
 Circuit of the Americas
 Sanction # 22-ST-56885

Race Groups:

1. FF, FV, F5
2. EP, FP, HP, GTL
3. GT1, GT2, GTX, AS, T1, PX
4. SRF3
5. SM, B-Spec
6. FA, P1, P2, FC, FE2, FX
7. STL, T2, T3, T4, STU, GT3

DATA BOX CARS MUST REPORT TO TECH AFTER EACH SESSION

Test Day Registration: Team Bldg. 2

SCCA Race Registration: Media Center

PLEASE NOTE: Starting times may be altered with little or no notice. Please pay attention to the PA and Race Groups running.

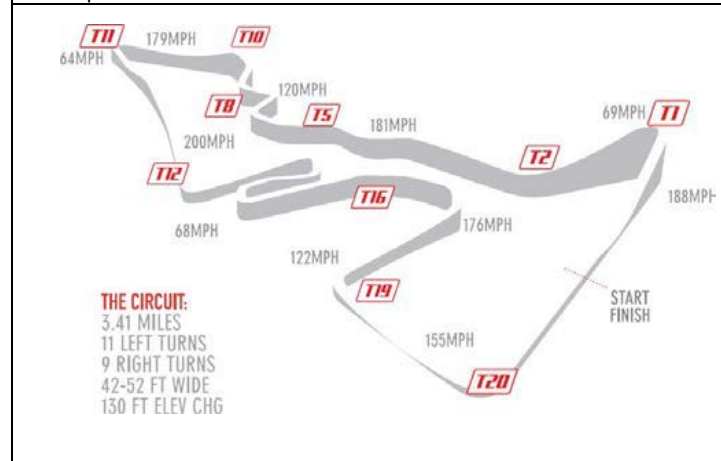
SCHEDULE:

Thursday Load In, February 3, 2022

2:00 pm – 7:00 pm Load-In Tunnel 2 Gate
4:00 pm – 7:00 pm Track Test Day Registration-Team Bldg. 2
10:00 pm – Track Gates Close

Friday, February 4, 2022

6:00 am Tunnel 2 Gate Opens & Load In
7:00 am – 9:00 am TEST DAY Registration-Team Bldg. 2
8:00 am – 5:00 pm Track Test Day hosted by Edge Addicts
2:00 pm – 7:00 pm SCCA Registration-Media Center
2:00 pm – 7:00 pm Tech Open
10:00 pm Track Gates Close



Saturday, February 5, 2022

6:00 am	Tunnel 2 Track Gate Opens
7:00 am – 2:00 pm	SCCA Registration-Media Center or Team Bldg. 2
7:00 am – 5:00 pm	Tech Open
6:45 am	F&C Meeting-Media Center
8:00 am	Group 1: 20 Min Qualifying
8:30 am	Group 2: 20 Min Qualifying
9:00 am	Group 3: 20 Min Qualifying
9:30 am	Group 4: 20 Min Qualifying
10:00 am	Group 5: 20 Min Qualifying
10:30 am	Group 6: 20 Min Qualifying
11:00 am	Group 7: 20 Min Qualifying
	LUNCH
12:05 pm	Group 1: 25 Min Race or 10 Lap Max
12:45 pm	Group 2: 25 Min Race or 10 Lap Max
1:25 pm	Group 3: 25 Min Race or 10 Lap Max
2:05 pm	Group 4: 25 Min Race or 10 Lap Max
2:45 pm	Group 5: 25 Min Race or 10 Lap Max
3:25 pm	Group 6: 25 Min Race or 10 Lap Max
4:05 pm	Group 7: 25 Min Race or 10 Lap Max
5:15 pm	Race Party at Media Center-All are welcome
10:00pm	Track Gates Close

Sunday, February 6, 2022

6:00 am	Tunnel 2 Gate Opens
7:15 am – 12:00 pm	SCCA Registration-Media Center or Team Bldg. 2
7:15 am – 5:00 pm	Tech Open
6:45 am --	F&C Meeting-Media Center
8:00 am	Group 1: 15 Min Qualifying
8:25 am	Group 2: 15 Min Qualifying
8:50 am	Group 3: 15 Min Qualifying
9:15 am	Group 4: 15 Min Qualifying
9:40 am	Group 5: 15 Min Qualifying
10:05 am	Group 6: 15 Min Qualifying
10:30 am	Group 7: 15 Min Qualifying
10:55 am	Group 1: 35 Min Race or 14 Laps Max
	LUNCH
12:15 pm	Group 2: 35 Min Race or 14 Laps Max
1:05 pm	Group 3: 35 Min Race or 14 Laps Max
1:55 pm	Group 4: 35 Min Race or 14 Laps Max
2:45 pm	Group 5: 35 Min Race or 14 Laps Max
3:35 pm	Group 6: 35 Min Race or 14 Laps Max
4:25 pm	Group 7: 35 Min Race of 14 Laps Max
5:00 pm	Load Out
10:00 pm	Track Closed

Fuels at the Track: 89, 93 Unleaded Octane Pump Gas
VP MS100 Unleaded; VP 110 & C12 Leaded

Special Fuel Orders contact:

Brad Horton at 210-241-1192 or vphq@vpracingfuels.com

The RV Lot Showers and Restrooms will be open to competitors and crew during the Event.



“The Lone Star Grand Prix”
SCCA Hoosier Super Tour
February 5-6, 2022
Circuit of the Americas
Sanction # 22-ST-56885

SUPPLEMENTAL REGULATIONS

This event is governed by the 2022 General Competition Rules (GCR) and Category Specifications, as amended for 2022 per “Fastrack” and these Supplemental Regulations.

I. REGISTRATION and FEES

- A. TEST DAY:** Track Test Day will be hosted by Edge Addicts. The Track Test Day is NOT covered under SCCA Sanction and Insurance. Track Test Day Online Registration will be available at the “Lone Star Grand Prix” event registration at www.motorsportreg.com.
- B. ENTRY FEES:** Entries received by February 1, 2022 will be charged **\$795**. Entries received after February 1st will be subject to a \$50 Late Fee. An entry is not considered complete until the proper fee, as listed on the Official Entry Form, is received. Each SRF3 and FE2 entry will be charged an additional \$30.00 compliance fee per entry for the weekend. SM entries will be charged a \$20.00 Compliance Fee. The organizers reserve the right to postpone, abandon, or cancel the event or any part of the event. Entry fees will be refunded to those offered no opportunity to compete. Lone Star Region reserves the right to reject any entry.
- C. PAYMENTS & REFUNDS:** Online registration is available at www.motorsportreg.com. **Online registration will close on February 1st, 2022 at 11:00 PM CDT.** Mailed entries will be accepted at the address listed on the Official Entry Form.
 - a. Refunds:** A full refund will be made if the entry is withdrawn prior to turning a wheel on track. Garage fees will be charged unless able to be reassigned by the Registrar. If you pre-enter and are a no-show, your check will be destroyed, and any credit card payments will be credited back to your credit card less garage fee, if applicable. If you sign in at registration and do not go through or pass Tech, you must notify the Chief of Registration, **BEFORE YOU LEAVE THE TRACK**, in order to receive your full refund.
- D. REGISTRATION:** Registration will be located at the COTA Media Center. Everyone arriving at the track after Registration hours are subject to the track’s admission policy. Please be sure you and your crew are aware of the registration hours. **Express Tech will be available at Registration for those who have an Annual Tech notation in your log book. Please bring your Current Log Book, Competition License and Helmet to Registration.**
- E. FREE ENTRY GIVEAWAY:** Free entry will be awarded to one driver registering for the event a minimum of 14 days prior to the weekend. A Driver name will be drawn at the event.
- F. AWARDS:** Trophies for all races will be awarded in accordance with the GCR. Trophies will be presented at the event. SCCA U.S. Majors Tour and Hoosier Racing Tire SCCA Super Tour points will be awarded in accordance with the GCR and these Supplemental Regulations.
- G. VICTORY LAPS:** Winners of all races will receive a checkered flag. **For Sunday races only**, following the cool down lap, the winner of each class should proceed immediately to pit central where they will receive a checkered flag and proceed on course for a single Victory Lap, weather and schedule permitting. Drivers need not wear their helmet or gloves during the victory lap, passengers are permitted in accordance with GCR 6.11.7. Drivers shall maintain a safe speed and be wary of safety vehicles that may be on course.
- H. PASSES:** Drivers may request up to 6 crew passes. The Registrar will not issue crew passes to persons not listed in the entry.
- I. PADDOCK AND GARAGE RESERVATION:** Competitor Garages available to paid entrants only for \$1,500 for the weekend. Garages may be reserved during online registration. Only rented garages assigned by Registration may be used. Assignment sheets will be posted in the garages, Tech area and will be available at Registration. Please do not request garages individually, separate from registration. See Load-in & Parking procedures and Regulation’s document in the event packet for more information.
- J. PREFERRED NUMBERS:** Every effort will be made to honor Conference Preferred Numbers until 14 days prior to the event. Due to the make-up of the run groups, however, this may not be possible in all situations. If two drivers holding the same Preferred Number request that number for the same run group, the number will be assigned to the driver with the earliest request. Secondary priority will be given to SOWDIV permanent numbers and will be honored for all entries received by February 1, 2022. Duplicates will be honored on a first come/ first granted basis.

II. DRIVER INFORMATION

- A. CAR ELIGIBILITY:** Competition is open to all cars conforming to the 2022 GCR, as amended by Fastrack.
- B. DRIVER ELIGIBILITY:** Drivers must be a current member of the SCCA and hold a SCCA Full Competition License to participate in this event. If you do not have the proper credentials, it is your responsibility to contact the Registrar on or before February 1st, 2022.
- C. TIMING & SCORING:** All cars are required to use fully operational My Laps/AMB TranX260 or X2 transponders, and the driver is responsible for providing correct information to Timing & Scoring. Make sure your transponder is on and functioning for ALL SESSIONS. Efforts will be made to broadcast Sector times during all sessions. These times are not official and will not be used or accepted in any way by Race Officials. “Please see Track Limits as attached”.
- D. TRACK LIMITS:** Due to the nature of the track, staying within the designated racing surface is paramount for a safe and competitive race track. Track limits (designations) will be aggressively enforced during the weekend. Please see Track Limits as attached. Specifics will be addressed at the Drivers Meeting. **Blend Lines will be treated as “concrete barriers” and are not to be crossed (unless forced across).** A penalty may be assessed for each confirmed track limits violation.



“The Lone Star Grand Prix”
SCCA Hoosier Super Tour
 February 5-6, 2022
 Circuit of the Americas
 Sanction # 22-ST-56885

- E. BLACK FLAG:** The Black Flag station is located at PIT IN. Drivers must stop at the Black Flag station if directed to do so by ACS/Black Flag. A number board will be displayed with all Black and Mechanical Black Flags at Start/Finish and at the designated Black Flag Station located at Turn 11B. Face coverings are required when talking to Black Flag Stewards.
- F. SOUND CONTROL:** Located on Drivers Left at Turn 6-7. Sound control readings will be posted in the Team Building 2.
- G. HARDSHIP LAPS:** Hardship laps will be allowed at the end of each session and race with the permission of the Black Flag Stewards, located in Pit Lane. Hardship lap cars will be released by Grid. No more than one hardship lap per car, defined as out and in, per day is permitted. A limited number of cars will be allowed for each hardship session. All safety gear and belts must be worn and the window net must be in place.
- H. AWARDS:** Trophies for all races will be awarded in accordance with the GCR. Trophies will be presented at the event. SCCA U.S. Majors Tour points will be awarded in accordance with the GCR and these Supplemental Regulations.

III. CAR SAFETY and TECH INSPECTION

- A. DECALS:** A Hoosier SCCA Super Tour and a U.S. Majors decal must be displayed on both sides of all competition vehicles. Competition vehicles must also display the official SCCA Road Racing decal per GCR section 9.3.28.C (Figure 4.) Stickers will be provided free of charge and may be obtained at registration and/or tech. (The official SCCA Summit Racing Equipment Road Racing decal does not serve as the Summit Racing Equipment contingency program decal.)
- B. LOGBOOKS:** Bring your logbooks to your initial visit to Tech. Weight/wheelbase must be filled in on tech sheet and event page in logbook. Weight and Restrictor size, if applicable, must be displayed on car.
- C. DATA ACQUISITION:** Hoosier SCCA Majors Tour staff and their delegates may install data acquisition equipment in a competitor's car. This program is to assist the CRB in performance balancing. If selected, participation is not optional and cannot be protested. The data collected from the devices will not be used for compliance purposes. **All cars carrying an SCCA data collection device must report to impound to be weighed immediately after their session. Failure to do so may result in penalties.**
- D. SPEC MIATA COMPLIANCE:** At post-race inspection, Spec Miata participants may be instructed by the designated Class Compliance Chief (CCC) to remove parts, including but not limited to the cylinder head, for disassembly and/or inspection. Competitors are responsible for performing required disassembly and/or reassembly of their car, as well as any resulting expenses incurred. The CCC will report any findings of non-compliance to the Race Director, who will then determine the need for a Chief Steward's Action (CSA) or Request for Action (RFA).
- E. SCALES:** Availability of scales and times are listed on the event schedule. Cars are to be pushed across the scales, not driven.
- F. No smoking or engines running in Tech garage.**

IV. QUALIFYING

- A. GRID:** Starting positions for the first sanctioned, official on-track session will be set using each driver's post mark/timestamp of their Entry form. Race 1 will grid based on the fastest lap recorded in Q1. Q2 will grid based on the fastest lap recorded in Q1 and R1. Race 2 grid will grid based on the best lap time recorded in Q1, R1 and Q2.
- B. QUALIFYING:** A driver not qualifying within a maximum of 115% of the recognized track record of their class must obtain permission from the Race Director to race. In the case of unusual circumstances, the Race Director can waive this rule for the entire event. Drivers who do not post a qualifying time may make a request to the Race Director to start at the back of the pack.

Updated 02/12/2021. COTA 3.41 Miles CCW

Class	115%	Class	115%	Class	115%
AS	2:56	GT1	2:29	P1	2:23
B-Spec	3:15	PX	2:28	P2	2:31
EP	2:51	GT2	2:35	SM	3:04
F5	2:43	GT3	2:44	SRF3	2:48
FA	2:20	GTL	2:55	STL	2:55
FC	2:31	GTX	2:43	STU	2:51
FE2	2:33	HP	3:07	T1	2:44
FF	2:42	FP	2:56	T2	2:46
FX	2:38			T3	2:55
FV	3:03			T4	3:01

- C. In the event the driver who qualifies the car is not able to race, a substitute driver must obtain written permission from both the Race Director and the Chief of Timing and Scoring and proceed to the registrar (and pay appropriate fee) after having obtained such written permission.**



“The Lone Star Grand Prix”
SCCA Hoosier Super Tour
February 5-6, 2022
Circuit of the Americas
Sanction # 22-ST-56885

V. IMPOUND

- A. **DRIVERS MEETING:** Impound All will be given at the end of the first Qualifying sessions on Saturday for each group to conduct a driver's meeting. Impound will be in the Tech Area. Look for the signs for proper direction.
- B. **SPLIT STARTS:** The Race Director will consider requests for split starts and may authorize and establish procedures for split starts per the GCR. Split starts procedures will be communicated during the mandatory Drivers Meeting.
- C. **IMPOUND:** Saturday Races: The top three competitors in each class shall report to impound immediately following the completion of their race. Trophy presentations and photos will occur in the Victory Circle area near impound following the race. Sunday Races: Impound ALL may be given following completion of the race for the podium ceremonies. Victory celebrations and award ceremony will be conducted in the Victory Circle area near impound following Sunday's races. Hoosier SCCA Super Tour door prizes will be awarded after each group's podium ceremonies. You must be present to win. Please be aware of the IMPOUND ALL or Additional IMPOUND Signs that may impound additional cars and drivers. Please comply as directed.
- D. **CONTACT:** GCR Section 6.11.1.E now requires drivers involved in significant body contact to stop for review of the incident by stewards. Drivers shall satisfy this requirement by reporting to the Race Director during Impound of their race group or as directed by the Black Flag Steward.

VI. GENERAL

- A. **RACE LENGTH:** Counter-clockwise configuration – 3.41 miles. **Saturday races will be 25 minutes or 10 Laps Maximum. Sunday races will be 35 minutes or 14 laps Maximum.** When the **LAST LAP INDICATOR** is given at Start/Finish the next flag will be a checkered flag.
- B. **RESULTS:** Grid sheets and race results will be available in the Driver's Lounge located at Team Building 2.
- C. **START TIMES:** Schedule times are cars on course
- D. **EVENT SCHEDULE / RUN GROUPS:** The schedule, as published, is for planning purposes only. Actual session start times may deviate from the published schedule based on actual event progression. It is the driver's responsibility to listen to the PA system and pay attention to activity on track. The Race Director may modify the schedule per GCR 5.12.2.
- E. **CLOTHING:** **Safe apparel must be worn in the pits at all times (long pants, shirts, and closed toe shoes).** Crew members on pit lane must display their event credentials at all times while on pit lane. **COTA requires that Long Pants be worn in Pit Lane.**
- F. **PIT LANE:** Drivers are to maintain a safe speed on Pit Lane with **absolutely** no racing. Access to the wall between the track and the pits is under the control of the Chief Pit Marshall. Crews may stay at the wall during an event for timing and signaling purposes only. **The concrete wall separating Hot Pit Lane from the garages must remain free from standing on or setting of any equipment.**
- G. **PADDOCK/PARKING INFORMATION:**
 - a. All support vehicles must fit within your paddock space.
 - b. If you have a rented a garage, you will only be allowed one paddock space for trailer and support vehicle. Canopies and awnings can only be used if you do not have a garage and it fits within your requested paddock space.
 - c. Fire lane access must remain open for emergency vehicles.
 - d. Please keep your paddock area clean by using the trash bags available at registration or Driver's Lounge.
- H. **EVENT STAFF:** The Race Chair, Race Director, Event Chief Steward and other race officials will normally be near TECH and Team Building 2. The Stewards of the Meeting will be located on the 1st Floor of the COTA Administration Building adjacent to Race Control.

VII. TRACK RULES

- A. The use of any wheeled conveyances is a privilege and may be withdrawn at the discretion of the Race Director or the Chief Steward. Improper use may be penalized. Only licensed drivers may operate a motorized vehicle in the paddock.
- B. **Skateboards, motorized skateboards or similar, rollerblades, etc. are NOT allowed.**
- C. Pets are **NOT** allowed at COTA.
- D. No race car engines may be started between 10:00 pm and 6:00 am.
- E. Maximum speed limit in the paddock is 15 mph.
- F. No fluids will be drained onto pavement or ground. Dump containers are located in the Main Paddock against the Track Fence between Turns 18-19.
- G. Driving stakes into the asphalt is prohibited.
- H. Driver's will be held financially responsible for damage they cause to COTA property (guard rails, etc.)



"The Lone Star Grand Prix"
SCCA Hoosier Super Tour
 February 5-6, 2022
 Circuit of the Americas
 Sanction # 22-ST-56885

OFFICIAL ENTRY FORM
 February 5-6, 2022 CIRCUIT OF THE AMERICAS 3.41-mile CCW
 Held under 2022 SCCA Competition Rules.

MAIL ENTRIES TO:
Will not sign overnight mail! NO FAXES
 Rosa Lee Smart 281-334-5153
 2102 Cherry Hills Drive NO Calls after 8pm CT
 League City, TX 77573
 Email: smart99@me.com
 Online: www.motorsportsreg.com

ENTRY FEES

- ☐ Majors Tour Event Fee.....\$795
- ☐ Additional Entry by Driver \$395
- ☐ SRF3 / FE2 Compliance Fee \$30; SM Fee \$20

Credit Cards will not be charge until Feb. 2, 2022

Late Registrations may be subject to a \$50 Late Fee

Garages Space Paid Entrants Only, subject to availability

Yes () No () \$1500 per Weekend in Advance

Multiple cars can occupy a garage but payment cannot be split in online Registration. Teams may make their own arrangements.

Checks Payable to "Lone Star Region SCCA"

Car Identification:					Number Assignment		
Make	Year (SS only)	Model	Class	Transponder #	SOWDIV Permanent	Other Preference	
						1st	2 nd
							3 rd

DRIVER:

Name: _____

Address: _____

City: _____

State: _____ Zip: _____

Phone: (____) _____

E-mail: _____

Emergency contact: At Track? Y__N__

Name: _____

Phone: (____) _____

Region of Record: _____

License: ☐ SCCA Full Competition

Competition license #: _____

Expiration date: _____

I agree to compete under the current General Competition Rules of the Sports Car Club of America and the Supplementary Regulations pertaining to this event. I further affirm that the car I have entered complies with the requirements for the class and category in which it is listed on this entry form. I hereby authorize the Race Committee to include the following persons on my pit crew with the understanding that I am responsible for their actions at the race.

Driver's Signature _____

Entrant's signature: _____

Regular Crew

1. _____
2. _____
3. _____
4. _____
5. _____
6. _____

Official Use

Car #:

Class:

Race Grp:

Races:

Rcd. Date:

Ack:

Fee(s):

T&S Card:

#1



"The Lone Star Grand Prix"
SCCA Hoosier Super Tour
February 5-6, 2022
Circuit of the Americas
Sanction # 22-ST-56885

DRIVER INFORMATION

February 5-6, 2022 CIRCUIT OF THE AMERICAS 3.41-mile CCW

ENTRANTS/DRIVERS **MUST COMPLETE** THE FOLLOWING INFORMATION AND RETURN WITH **ENTRY FORM**

Timing and Scoring Information (Required)

Transponder Number _____ **Race Group:** _____

Car: Make: _____ Model (SS): _____ Yr: _____ Color: _____ Class: _____ No.: _____

Driver:

Name: _____ City/State: _____

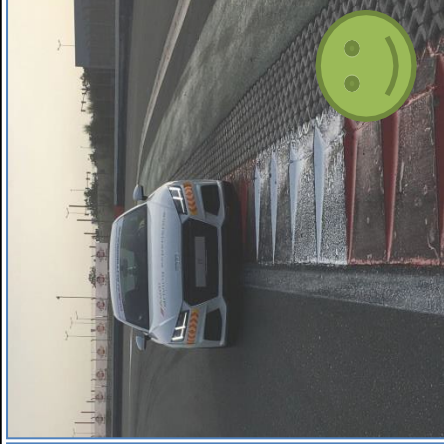
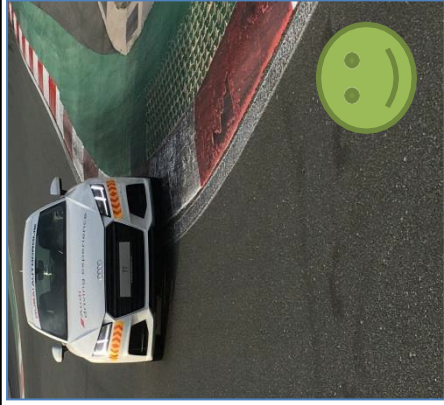
Membership #: _____ Region of Record: _____



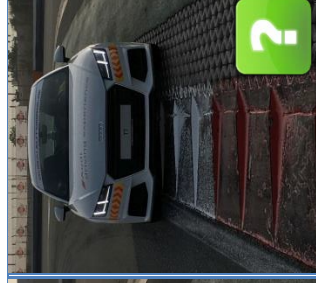
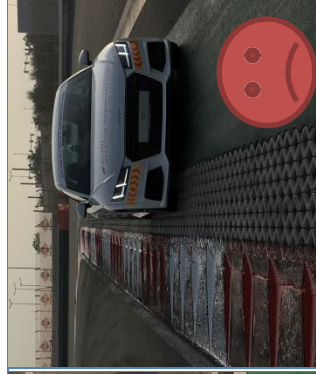
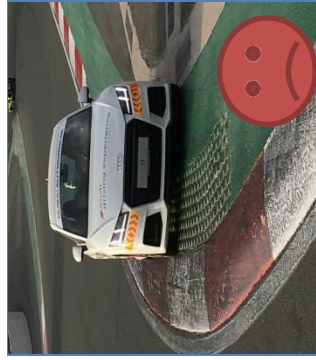


COTA Track Limits Information

Two wheels on track and two off-track is allowed



Four wheels off track is not allowed.

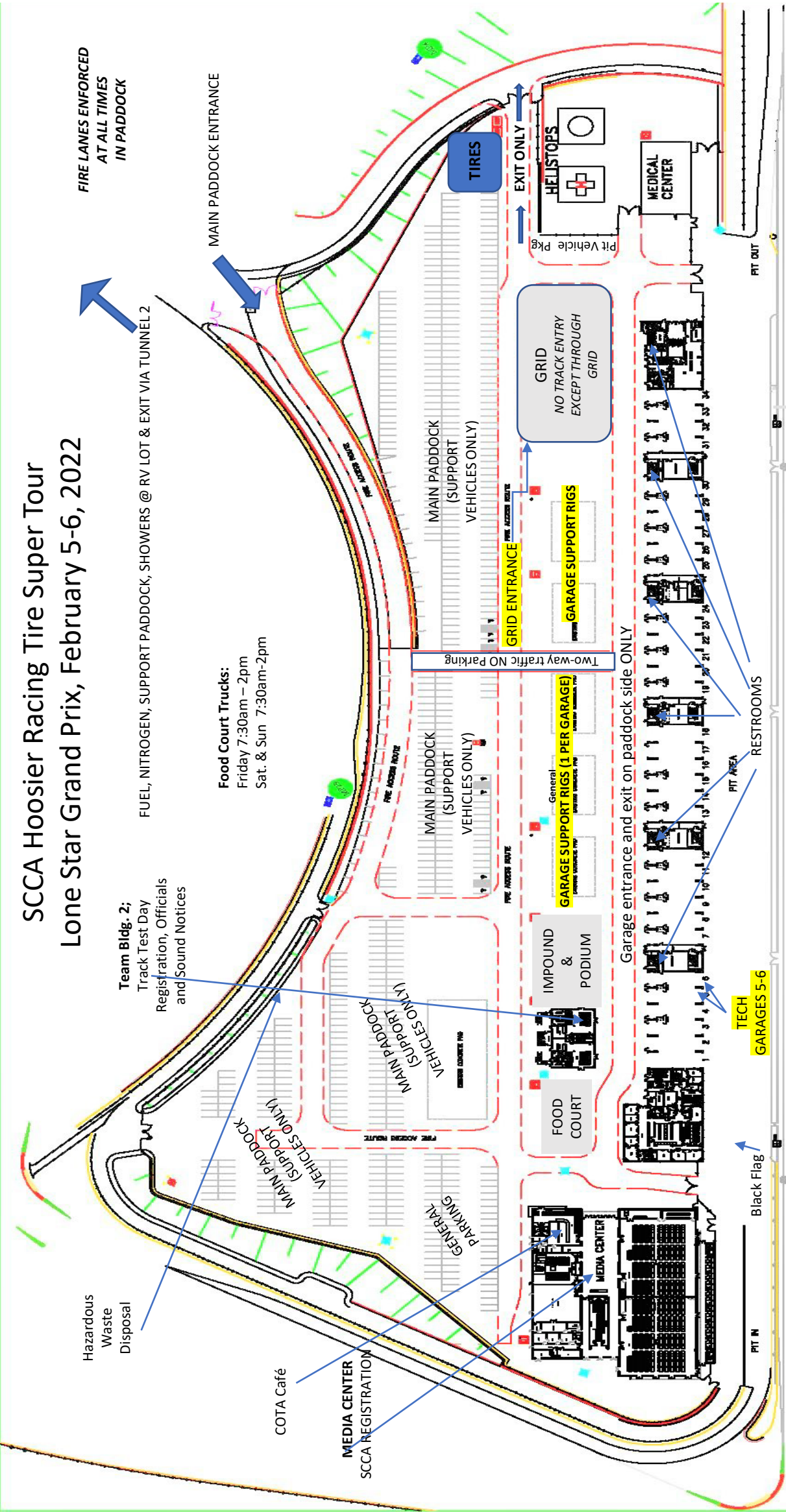


Track Limits will be two wheels over the first white line and two wheels inside the first white line.

Blend Lines will be treated as “concrete barriers” and not to be crossed (unless forced across).

SCCA Hoosier Racing Tire Super Tour Lone Star Grand Prix, February 5-6, 2022

FIRE LANES ENFORCED
AT ALL TIMES
IN PADDOCK



Team Bldg. 2;
Track Test Day
Registration, Officials
and Sound Notices

Food Court Trucks:
Friday 7:30am – 2pm
Sat. & Sun 7:30am-2pm

COTA Café

MEDIA CENTER
SCCA REGISTRATION

MAIN PADDOCK
(SUPPORT
VEHICLES ONLY)

MAIN PADDOCK
(SUPPORT
VEHICLES ONLY)

MAIN PADDOCK
(SUPPORT
VEHICLES ONLY)

MAIN PADDOCK
(SUPPORT
VEHICLES ONLY)

MAIN PADDOCK
(SUPPORT
VEHICLES ONLY)

TIRES

EXIT ONLY

HELISTOPS

MEDICAL CENTER

Pit Vehicle Pkg

GRID

NO TRACK ENTRY
EXCEPT THROUGH
GRID

GRID ENTRANCE

GARAGE SUPPORT RIGS

GARAGE SUPPORT RIGS (1 PER GARAGE)

IMPOUND & PODIUM

FOOD COURT

RESTROOMS

PIT AREA

TECH GARAGES 5-6

Black Flag

PIT IN

PIT OUT

Garage entrance and exit on paddock side ONLY

Two-way traffic NO Parking

General

General

Pit Lane Rules: NO SMOKING/NO VAPING; NO sitting, standing or objects on pit divider wall, no shorts, closed shoes required, 16 or older + credentials beyond yellow line pit side of garages.
No fueling allowed in pit lane. HOT Pit lane speed limit 35mph; COLD Pit lane speed limit 10mph—NO DRIVING COLD SIDE BEYOND TECH.

"The Lone Star Grand Prix"

SCCA Hoosier Super Tour

February 5-6, 2022

Circuit of the Americas

Sanction # 22-ST-56885

PLEASE READ: IMPORTANT REGISTRATION INFORMATION

SCCA REGISTRATION SCHEDULE:

FRIDAY, February 4: 2:00 PM to 7:00 PM

SATURDAY, February 5: 7:00 AM TO 2:00 PM

SUNDAY, February 6: 7:15 AM TO 12 PM

Entry to COTA will be via FM 812 to COTA Blvd. or from the North COTA Entrance from Hwy 71. The Tunnel 2 Gate located on COTA Blvd. will be the only access to the COTA Paddock.

SHUTTLES: Shuttles will **NOT** be running during at this event. Lot A will be closed to all vehicles.

REGISTRATION: Drivers can register for the race online at (www.motorsportreg.com). Drivers without internet access may request a paper entry form and mail it with their entry fees to Chief Registrar: Rosa Lee Smart, 2102 Cherry Hills Drive, League City, TX 77573. **Make checks payable to "Lone Star Region SCCA"**. A fee of \$30 will be charged for any check returned by the bank. Please do not mail entries by any method that requires a signature upon delivery.

ENTRY FEES: Entry fee for the 2-Day Super Tour weekend is **\$795** if registered by **11:00 pm February 1st**. Each SRF3 / FE2 entry will be charged an additional \$30 compliance fee per entry for the weekend. A SM entry will be charged a \$20 compliance fee. **Credit Cards will not be charged until February 2nd 2022**. Late Registrations after February 1st may be subject to a \$50 Late Fee.

REFUNDS: A full refund will be made if the entry is withdrawn prior to turning a wheel on the track. Garage fees will be charged unless Lone Star Region is able to reassign the garage by the REGISTRAR.

ENTRY FEE PAYMENT: Drivers who complete their registration on-line through www.motorsportreg.com, can pay using credit card at the time of registration but will not be charged until February 2, 2022. Credit cards, checks and cash will be accepted for drivers submitting paper entries, or for entries received at the track but the late fee will be determined when the Registrar receives full payment. We ask that you have the correct change if paying cash.

KC GOLF CART CO. RENTALS: Contact Andy Leiker at andy@kcgolfcartco.com. The KC Golf Cart Barn is located on Circuit of the Americas Blvd., North of the Tunnel 2 Gate Entrance, past the RV lot.

RV PARKING and RV Lot Rental: When space is available, RV Parking is permitted in the Paddock.

RV Lot Rental is also available in the designated RV Lot and must be reserved in advance.

Contact: 512-655-6226

SHIPMENTS: Teams that have shipments sent to the track should make sure that the packages are clearly marked with the individual's name, Team or Group Name, cell number garage number and address to:

Circuit of The Americas

Attn: Individual Name – Group Name

(Cell Phone, Garage # or Paddock Area)

9201 Circuit of The Americas Blvd.

Del Valle, TX 78617

GARAGE INFORMATION: Garages are 20' X 65'. Garages are equipped with 120 outlets. 22v, 30amps 60Hz. Private Bathrooms, Epoxy Floors, Compressed air hookup (no hoses), Water spouts outside each garage and Double automatic garage doors.

COTA RIG PARKING: COTA can provide Rig parking before or after the race weekend for \$50 per day.

Contact: Courtney David (512) 655-6561 or (512) 648-7133, courtney.david@thecircuit.com



**“The Lone Star Grand Prix”
SCCA Hoosier Super Tour**

February 5-6, 2022
Circuit of the Americas
Sanction # 22-ST-56885

Staging, Load-In and Paddock Procedures and Regulations

A. COTA Blvd rules:

1. The center lanes must always remain completely open for thru traffic.
2. No pit vehicles may be operated on COTA Blvd.
3. Keep your vehicle completely within a single, marked lane.
4. Stay completely in your lane: NO RV SLIDES may be opened if they exceed your lane width.
5. Do not block driveways and do not park or stage in fire lanes.

B. STAGING:

1. Staging begins at 12:00 pm, Thursday, February 3rd, 2022. Before staging begins, you may park in a designated Truck Parking lot. They are marked and are off of COTA Blvd.
2. After Thursday Load-In ends, STAGE ONLY IN LANE 1 AS DESCRIBED BELOW.
3. From FM 812, enter COTA Blvd and line up 150' before Tunnel 2 security in the correct lane.
4. Then, **ALL personnel proceed to Tunnel 2 Guard to sign Track Waiver and get your wristband.**

DO THIS BEFORE LOAD-IN STARTS.

5. STAGING LANE ASSIGNMENTS:

- a. LANE 1 CURBSIDE (Northbound – from FM 812): Main and Support Paddock Rigs
- b. LANE 2 2nd LANE FROM CURB (Northbound – from FM 812): Garage Support Rigs Only (1 per garage)
- c. ALL OTHER LANES TO REMAIN OPEN FOR TRAFFIC AT ALL TIMES.

C. LOAD-IN

1. Load-In begins at 2:00 pm Thursday, February 3, 2022.
2. LOAD-IN ORDER:
 - a. Lane 2: Designated Garage Support Rigs
 - b. Lane 1: Big Rigs, Toter Rigs, RVs with Trailers, then: All other Rigs/Vehicles with Trailers.
3. Paddock Load-In continues at 6:30 am Friday, February 4, 2022 on a first come first served basis.
4. IMPORTANT NOTE: IF DESIGNATED GARAGE SUPPORT RIGS DO NOT LOAD-IN WITH THAT GROUP ON THURSDAY, **WE CANNOT GUARANTEE THAT YOU WILL BE ABLE TO PARK YOUR RIG NEAR YOUR GARAGE.** GARAGE SUPPORT RIGS ARE THE FIRST LOAD-IN GROUP AND START AT 2:00 PM on Thursday.

D. OTHER:

1. Park in your staging line then proceed on foot to the security shack at Tunnel 2 to sign the COTA Waiver and receive your wristband. **All vehicle occupants must sign, including minors.** *Pit vehicles are prohibited from operating on COTA Blvd.*
2. DO NOT BLOCK FIRELANES OR OTHER VEHICLES OR TRAILERS AT ANYTIME.
3. Other than paid garage occupants (one support rig per garage), each entrant will be directed to a paddock space in the Main or Support Paddock at the time of Load-In.
4. PARTICIPANTS DESIRING TO PADDOCK WITH OTHER PARTICIPANTS MUST STAGE **AND** LOAD-IN TOGETHER. PADDOCK ASSIGNMENT IS BASED ON RIG SIZE (BIGGEST 1ST) AND IS 1ST COME 1ST SERVED AND IS UNDER THE SOLE DIRECTION OF THE PADDOCK MARSHAL.
5. Garages are allowed only ONE support vehicle (trailer/Truck) for each garage. Any unauthorized vehicle parked in a designated garage support parking space **will be required to relocate.** All transport vehicles for other garage will be allowed to unload, but those trailers must then be dropped in the support paddock. Lot A will not be available.

