

Information for September 10th – 12th, 2021 CVAR Brad Balles Races and Driver's School at Eagles Canyon Raceway ("ECR")

All,

We are looking forward to our upcoming race at ECR and wanted to make sure that everyone had all the information they needed:

- **General – Please see use map from ECR below**



- A) Hospitality Tent
- B) Corner Worker Tent camping
- C) Timing & Scoring Building
- D) Non-Trailer hauler motorhome camping, overflow trailer parking
- E) Overflow Parking

- **Safety**

- Please make sure that no unsupervised minors drive scooter, golf carts or other motorized vehicles around the paddock area. ECR has had some close calls and incidents on some recent events and want to make sure we do not have any problems.
- The speed limit in the paddock and false grid areas is 15 MPH.

- **New Procedures**

- In the event of any schedule change(s) over the weekend we will reprint the revised schedule on yellow paper and have copies hand delivered throughout the paddock

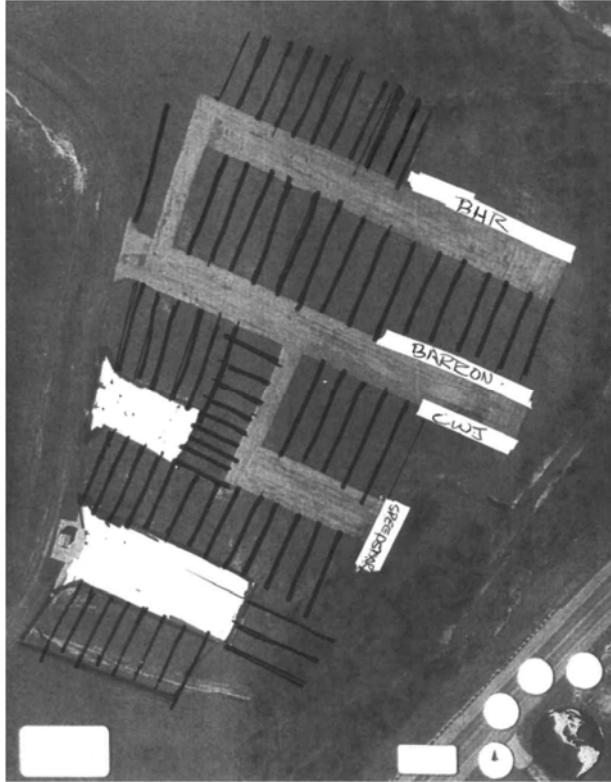
- CVAR officials, such as Chief Steward, Safety Chairman, etc. will be wearing bright orange “CVAR” golf shirts on the weekend. Those individuals will be designated as official “problem solvers” for all entrants. Feel free to direct any questions to them.

- **Track Access/Paddock Parking**

- Last year our parking plan worked very well so we believe we have an adequate amount of parking to address the requirements all of our entrants.
- The front gate will be closed until 2:00PM on Thursday September 9th and there will be NO Entry. Safety concerns will not allow any staging or parking on FM 51 or the Track driveway entrance area. Please do not arrive before 2:00PM.
- Several multi-car teams with large trailers (Speedstar, Bigger Hammer, Barron and CWJ) will be given paddock entry at 1:30PM as they each have assigned spaces.
- **Paddock Marshalls will direct field parking and release to the paddock area.**
- We will have multiple parties to sign waivers and provide wrist bands.
- You will be directed to the paddock parking area based on the following criteria:
 - Trucks, and single car trailers of less than 24’ may be directed to either the Lower Paddock Area or the Middle Paddock Area, depending on time of arrival and will park “East/West” as shown below.



- Trucks and trailers in excess of 24’ (including ALL motorhomes and Motorhomes pulling trailers) will be directed to the Lower Paddock Area and will park as shown below.



- Once you reach the appropriate paddock area you will be directed by another Paddock Marshall to park in the furthest available parking space
 - **There will be no saving spaces for other parties.** If you would like to pit next to or with a group of entrants, then you must wait for all parties to arrive and then go to your paddock location.
- **Food Service at the Track**
 - ECR has acquired a new Food Truck which will be operated by Maggie Williams. It will be available all three days and will have breakfast and lunch items on the menu. If you can please help support them!
 - During the lunch break, all corner workers will be able to get to the front of the line for lunch.
 - **Fuel at the Track**
 - 93 and 98 unleaded racing fuel and 110 leaded racing fuel will be available at the track.
 - **Showers**
 - The showers in the Main Clubhouse will be open until 8:00PM on Friday and Saturday evening.

- **CVAR Saturday Evening Party**

- We are planning what we hope will be a great party for all our entrants, workers and guests for Saturday evening beginning at 6:00PM and ending around 9:00PM.
- The food will be provided by Sam LeComte and there will be music, adult beverages, etc.
- The party will be at the Concierge Facility on the top of the hill above Turn 1 and we will be providing extra golf carts to assist in providing access.