



Phone (919) 809-9583
Email info@maxtracktime.com
Web www.MaxTrackTime.com

Road Atlanta Testing Event - July 27, 2023

Load-In & Schedule

Load-In Assisted load-in will be on Wednesday, July 26th 5 PM-9 PM. Load-in will continue past 9 PM but will be self-directed. Max Track Time participants may park their race cars, haulers, and street vehicles in the Road Atlanta infield paddock (see Facility/Paddock Maps section). Prior to load-in, teams may stage their trucks in the staging lanes outside the Road Atlanta gate starting at noon.

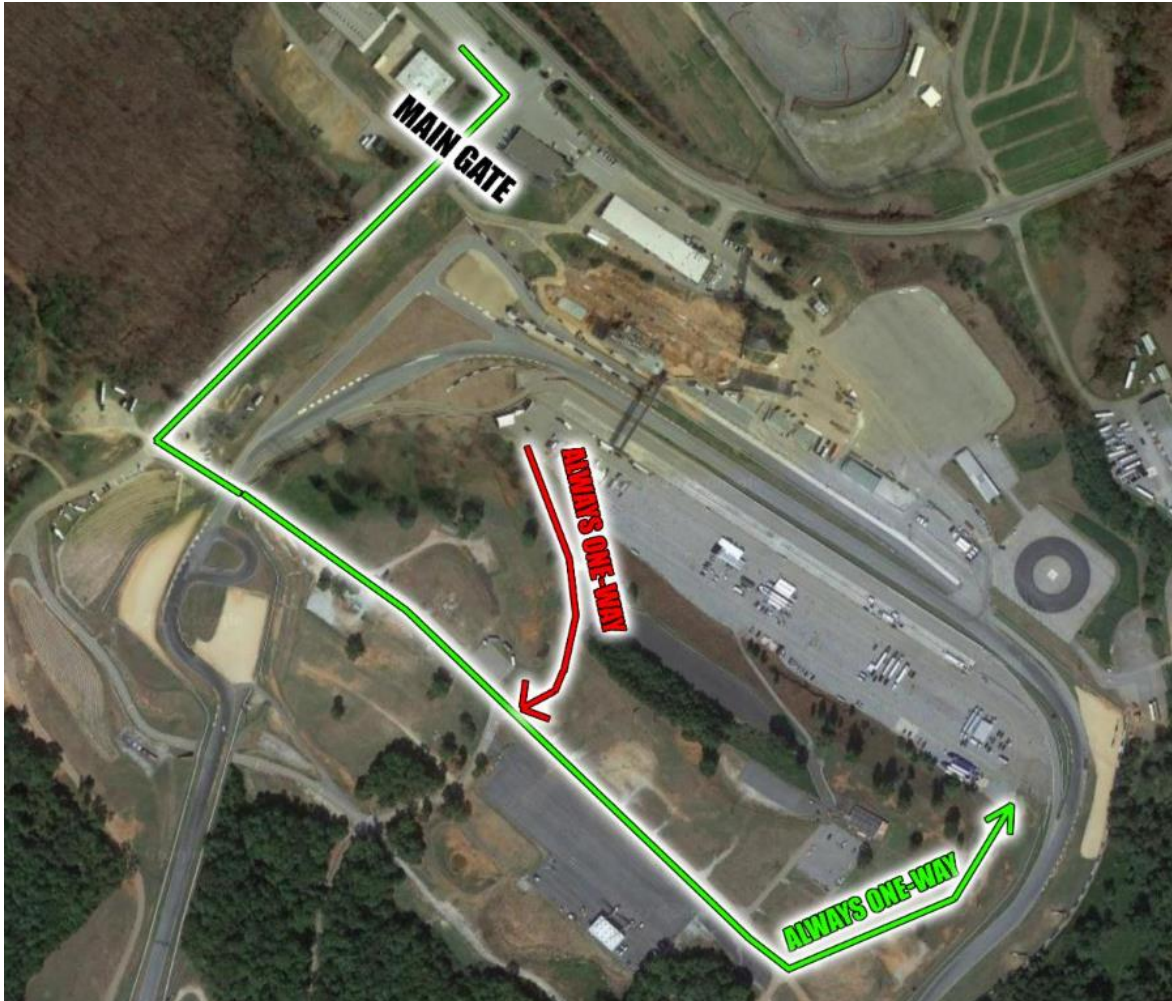
Note: WRL load in will begin at 2 PM on Thursday, July 27th. Please ensure your rig/equipment is setup in the space you intend to use during the race weekend and is not occupying additional spaces.

Load-Out All drivers/teams not competing in the WRL weekend must exit the Road Atlanta paddock by the end of the day on Thursday, July 27th at 7:00 PM

Staging Diagram



Load-In Route



RV Camping Reservations For any teams wishing to camp at the track, please contact [WRL](http://www.WRL.com).

Registration/Driver's Meeting Registration and a short drivers meeting will be hosted in the Road Atlanta paddock on Thursday, July 27th. Full Day Registration will be open from 8:00 AM – 8:30 AM in the paddock with the **Mandatory Driver Meeting at 8:30 AM**. If a driver misses the driver meeting, a second meeting will be held at 9:00 AM. All participating drivers must sign in and sign the provided waivers at check in. **Please See Minor Driver section below for drivers under 18 years of age.**



Phone (919) 809-9583
Email info@maxtracktime.com
Web www.MaxTrackTime.com

Full Day Schedule

8:00 AM – Full Day Registration/Check In – (Paddock by pit entry)
8:30 AM – **Mandatory Drivers Meeting** – (Paddock by pit entry)
9:00 AM – 12:00 PM – Open Track (Registered Cars/Drivers Only. No Passengers)
12:00 PM – 1:00 PM – Lunch
1:00 PM – 5:00 PM – Open Track (Registered Cars/Drivers Only. No Passengers)

Note: WRL Load-In at 2 PM. Please ensure your rig/gear is in the correct space.

Event Requirements

Cars Entrants are expected to prepare their car for the duties of track driving to the minimum standard outlined in our [Tech Guide](#). Should a car be suspected of not being safe for track use, the organizers reserve the right to deny track access at any point during the event. For questions about eligibility, please contact info@maxtracktime.com.

Drivers All drivers must have full racing gear including: Nomex Suit, SA2015/FIA2018 or newer Helmet, Racing Shoes, Balaclava, Nomex Socks, HANS device or comparable neck protection. Failure to have appropriate driving gear will result in denial of track access until appropriate gear is obtained.

MINOR DRIVERS Minors aged 16-17 are permitted to drive provided they have filled out our minor waiver. A legal parent or guardian must either be present, or have the waiver signed, notarized, and presented at the event for the minor to participate.

Paddock Map

For teams not competing in the WRL weekend, please park your rig as close to turn 12 (starting at pit space 65 and down) as possible to ease the challenge of load-out.





Phone (919) 809-9583
Email info@maxtracktime.com
Web www.MaxTrackTime.com

Parts/Gear Support [DiscoveryParts](#) will be supporting our event. If any will-call items are needed, please let them know by Monday July 24, 12:00 EST.

Contact Phone: 706-344-1235

Fuel Road Atlanta stocks VP 93, 96, and 100 octane fuel at their on-site fuel station.

Packages / Shipping Any packages shipped to the track will be available for pickup at the administrative offices.

Shipping Address:

[Team name / Max Track Time / Phone number]

5300 Winder Hwy,

Braselton, GA 30517

MEDICAL INFORMATION

Facility Medical the ambulance will be parked next to the timing tower. In the event of an emergency, please alert Road Atlanta or Max Track Time staff. The ambulance will be dispatched to your location.

Hospital Address:

NorthEast Georgia Medical Center

743 Spring St NE

Gainesville, GA 30501