

South Bend Region, SCCA Present The Summer SpeedFest



Double Regional
Great Lakes Division
July 18-19, 2026(Saturday afternoon-Sunday)
GingerMan Raceway | 2.14 Mile Road Course | Clockwise
Sanction# 26-R-66296

The SCCA strives to ensure that ALL participants in its events and activities enjoy a welcoming environment. The SCCA supports equality of opportunity and treatment for all participants and will make every effort to maintain an environment that is free of harassment, discrimination, and any behavior that interferes with a safe, fun, and exciting experience. A commitment to a welcoming environment and the SCCA Values is expected of all its members and attendees, including drivers, workers, crew, guests, staff, contractors and exhibitors, and other participants at SCCA activities, sessions and social events and when representing the SCCA in print or electronic media.

SUPPLEMENTAL REGULATIONS

This event is held under the current SCCA General Competition Rules as amended by Fastrack and these Supplemental Regulations.

I. REGISTRATION and FEES

A. TEST DAY: GingerMan Raceway is holding a test day on Thursday evening, July 16. This is NOT covered by SCCA sanction or insurance. [GingerMan Evening Test Link](#)

B. ENTRY FEES:

1 driver – 1 car-Double Regional	\$520
1 driver- 2 Regional Classes	\$825
1 driver-1 car-Regional Fee if registered for the Majors	\$250
1 driver-2 Regional Classes if registered for the Majors	\$410

ADDITIONAL FEES:

SRF, SRF3, FE,FE2	\$30
Runoffs Appearance Fee for Runoffs Eligible Classes	\$20
Late Fee After 11:59 PM, July 10, 2026	\$50
Saturday Pizza Party Dinner Fee(per person)	\$10

C. PAYMENTS & REFUNDS: Drivers must register for the race online by clicking [here](#). For registration questions, contact the Registrar, Marilyn Russell at rotaryracer@comcast.net. If a driver never enters the track and would like a refund, they must contact the Registrar via email within five days of the completion of the event.

D. PASSES: Each entry must list their crew members on the entry form. Each driver is allowed four free crew passes. Additional passes are available for \$10 per person. If a crew member arrives outside registration hours, they must pay the GingerMan spectator fee at the gate. All entrants/crew must either possess an SCCA Annual Waiver or sign the SpeedWaiver before or at the time of registration [SpeedWaiver Link](#)

E. ELECTRIC HOOKUP/GARAGE RESERVATION: Contact GingerMan Raceway at (269) 253-4445 to rent a garage or obtain electric hookup.

F. PADDOCK/PARKING INFORMATION: The paddock will open at 1:00 pm on Wednesday. All parking is first come first served with the exception of the 14 spots with electric hookup. All competitors parked in the main paddock must use "pull-in" parking unless other arrangements have been made with the race chair. Race cars may park on the asphalt extension of the inner-loop of the main paddock as long as two-way traffic pattern is retained. No parking is allowed on the asphalt in the grid area located north of the main paddock.

II. DRIVER INFORMATION

A. DRIVER ELIGIBILITY: Each driver must be a current member of the SCCA and hold an SCCA Full Competition license, SCCA Novice Permit, Waterford Hills Road Racing License or Midwest Council License to participate in this event. If you do not have the proper credentials, it is your responsibility to contact the Registrar prior to the event.



South Bend Region, SCCA Present The Summer SpeedFest

Double Regional

Great Lakes Division

July 18-19, 2026(Saturday afternoon-Sunday)

GingerMan Raceway | 2.14 Mile Road Course | Clockwise

Sanction# 26-R-66296



- B. **CAR ELIGIBILITY:** Regional Competition is open to all SCCA eligible classes. Cars must have a SCCA logbook and current annual. MCSCC rules and classes may be found here: [MCSCC GCR](#). MCSCC class rules are accepted and meet safety standards of 9.3 and 9.4 of the current SCCA GCR.
- C. **TIMING & SCORING:** All cars are required to use fully operational MyLaps (formerly AMB) transponders, and the driver is responsible for providing correct information to Timing & Scoring. Make sure your transponder is on and functioning for ALL SESSIONS. Information gathered from personal timing and data collection systems is unofficial and will not be used by race officials. Cars without working Transponders will not be timed.
- D. **BLACK FLAG:** Black Flag stations will be located at Turn #7 and the Starters Stand. Drivers receiving a Black Flag will enter pit lane and proceed to the Black Flag station in front of the control tower.
- E. **SOUND CONTROL:** A maximum limit of 103 dB is in effect for this event. Sound readings will be taken on the driver's left between turns 2 and 3. Sound readings will be available at Driver Information.
- F. **HARDSHIP LAPS:** Please contact the Chief Steward.
- G. **AWARDS:** Trophies for all races will be awarded in accordance with the GCR and will be available at Drivers Information.
- H. **VICTORY LAPS:** Due to time constraints there will be no victory laps.

III. TECH INSPECTION

A. TECH INSPECTION:

1. All drivers without a current year helmet sticker must present all driver gear as required by the GCR, vehicle logbook, and completed tech card to Tech. **If your car requires an annual tech OR you have Logbook notations, you must bring the car to Tech. Contact Chief of Tech, Rod Markowicz, rodionjm@yahoo.com.** Annual Tech will be located in the lower level of the Timing and Communications Tower.
 2. Drivers that have a valid Annual Tech, 2026 Helmet sticker and no notations in their logbook will only need to bring their logbook and completed tech form to Tech at the base of the tower to receive their event "tech" sticker.
- B. **DECALS:** Competition vehicles must also display the official SCCA Road Racing decal per GCR section 9.3.29.C (Figure 4.) Stickers will be provided free of charge and may be obtained at registration and/or tech. (The official SCCA Summit Racing Equipment Road Racing decal does not serve as the Summit Racing Equipment contingency program decal.)
 - C. **SCALES:** Will be available at Tech 30 minutes after Registration opens on Saturday and Sunday. Scales may be made available during race impound, but priority will be given to impounded cars.

IV. QUALIFYING

A. GRID:

1. Qualifying 1 starting positions are first come first served. Results determine starting position for race 1.
2. Race 2: Grid positions for race 2 will be determined by the driver's fastest time in race 1 or qualifying.

B. **SESSION CLOCK:** The session clock will start when cars are released from the grid.

V. IMPOUND

- A. **MANDATORY DRIVERS MEETING:** **A mandatory driver meeting will be conducted following the first qualifying session for each run group. Drivers must report directly to the Impound area by Tech at the completion of their session.**
- B. **SPLIT STARTS:** The Chief Steward will consider requests for split starts at the driver's meeting.
- C. **IMPOUND:** The top three competitors in each class must report to impound immediately following the completion of their race.
- D. **CONTACT:** GCR Section 6.11.1.E requires that the driver and car involved in significant body contact must stop at the designated incident investigation site at the base of the Tower for review of the incident by stewards. Drivers must satisfy this requirement by reporting to the Chief Steward during impound of their sessions. Drivers who do not satisfy this requirement will be referred to the Stewards of the Meeting (SOM).



South Bend Region, SCCA Present The Summer SpeedFest



Double Regional
Great Lakes Division
July 18-19, 2026(Saturday afternoon-Sunday)
GingerMan Raceway | 2.14 Mile Road Course | Clockwise
Sanction# 26-R-66296

VI. GENERAL

- A. **RACE LENGTH:** Race 1 and Race 2 will be 30-minutes.
- B. **STARTS:** Starts will be conducted per GCR.
- C. **RACE CLOCK:** The race clock will be started for either a timed or lap race when the lead car crosses the time loop/Start-Finish whether or not the race is started or aborted after the prescribed pace lap(s). The race clock will not be stopped unless under a Red Flag situation or directed by the Chief Steward. In the case of a long delay and the time limit for either a lapped or timed race has expired, the Chief Steward may convert the race to a specific number of laps to allow for a "Green, White, Checker" to complete the race.
- D. **LAST LAP:** If/When the Last Lap indicator is given at Start/Finish, the next flag at Start/Finish will be a checkered flag. The lack of a last lap indication cannot be protested as a last lap indication is only a courtesy.
- E. **RESULTS:** Live timing will be available during the event at <https://speedhive.mylaps.com/> and <https://www.race-monitor.com/live>. Live timing information is neither official nor protestable. Results will be available at Driver Information located in the pavilion.
- F. **START TIMES:** Schedule times are cars on course.
- G. **EVENT SCHEDULE / RUN GROUPS:** Actual session start times may be delayed from the published schedule due to unforeseen circumstances during the event. It is the driver's responsibility to listen to the PA system and pay attention to activity on track. The schedule or run groups may only be changed (or start times advanced) at the discretion of the Chief Steward, with concurrence by the Event Chair, depending on pre-race entry counts or as needed to accommodate situations during the event.
- H. **CANCELLATION:** If part of an event is canceled for reasons of safety or forces beyond our control as provided by GCR Appendix B 1.2., points will be awarded based on race grids.
- I. **CLOTHING:** All participants in the pit lane must wear long pants, closed-toe shoes, and sleeved shirts. Crew members on pit lane must display their event credentials at all times while on pit lane.
- J. **PIT LANE SPEED:** The pit lane speed limit is 40 mph.
- K. **TIRE VENDOR:** Hoosier Tire Midwest-Plymouth will be servicing this event(TENTATIVE). In order to provide you with the best service possible, we ask that you place a tire reservation. Please contact Fred Awald to reserve your tires. f.awald1980@gmail.com or hoosiertireply@aol.com or call (574) 936-8344
- L. **FUEL PROVIDER:** 93, 100 and 110 octane fuel are available at the track.
- M. **RADIO FREQUENCIES:** South Bend Region operates on frequencies **151.625, 154.640, 154.600, 154.570, 464.500, and 456.800**. The repeater receives on 152.870 and transmits on 159.615. These frequencies may be monitored but will not be used for communication by any participant. No other radio frequencies may be transmitted from the tower due to the interference caused with the official track frequencies.

VII. TRACK RULES

- A. **CAMPING:** Camping is allowed in the paddock on Wednesday through Saturday nights. The cost is \$10.00 per person per night. Children under 12 are free.
- B. **PETS:** Must be on leashes at all times and owners are responsible for any associated clean up. No pets allowed in the grid, park area around the pond and the pavilion.
- C. **SALE OF PRODUCTS/SERVICES:** You must get track management approval.
- D. **WASTE:** The track property must be left clean. Waste oil must be put in the green tank located near the fuel pumps. Tires must not be left on the track property.
- E. **SPEED:** The maximum speed limit in the paddock is 10 MPH. Absolutely NO bedding of brakes in the paddock.
- F. **LOAD OUT:** You must depart by 8:00 pm on Sunday. Arrangements must be made with the track management if items must be left after this time.
- G. **ALCOHOL:** The consumption of alcohol is not allowed on track property before the final checkered flag of the day.
- H. **EMERGENCY CALLS:** The emergency number at GingerMan Raceway is (269) 253-4445.



South Bend Region, SCCA Present The Summer SpeedFest



Double Regional
 Great Lakes Division
 July 18-19, 2026(Saturday afternoon-Sunday)
 GingerMan Raceway | 2.14 Mile Road Course | Clockwise
 Sanction# 26-R-66296

SCCA SpeedFest Double Regional	
Schedule of Events**	
<i>Times are approximate and for planning purposes only. Pay attention to groups on track and the PA!</i>	
Saturday, July 18, 2026	
7:00-10:00 AM	
11:30-3:30 PM	Registration at Gate/Tech at base of the tower
2:45 PM	25-minute Qualifying Regional Group 1
3:15 PM	25-minute Qualifying Regional Group 2
3:45 PM	25-minute Qualifying Regional Group 3
4:15 PM	25-minute Qualifying Regional Group 4
4:45 PM	25-minute Qualifying Regional Group 5
5:15 PM	Worker/Driver Dinner(Free for volunteers/\$10 for driver and crew)
Sunday, July 19, 2026	
7:00-10:00 AM	Registration at the gate
8:00 AM	30 minute Race 1 Regional Group 1
8:40 AM	30 minute Race 1 Regional Group 2
9:20 AM	30 minute Race 1 Regional Group 3
10:00 AM	Quiet Time/Lunch
12:00 PM	30 minute Race 1 Regional Group 4
12:40 PM	30 minute Race 1 Regional Group 5
1:20 PM	30 minute Race 2 Regional Group 1
2:00 PM	30 minute Race 2 Regional Group 2
2:40 PM	30 minute Race 2 Regional Group 3
3:20 PM	30 minute Race 2 Regional Group 4
4:00 PM	30 minute Race 2 Regional Group 5
Regional Groups-Saturday and Sunday**	
Group 1	FC,CFC,ASR, P, P2, GTX, FA, FE, FE2, FX, FS,SR1,SR3(CSR,DSR,S2,CS2,CFI)#
Group 2	T3, T4, ITR, ITS, ITA, ITB, ITC, IT7,SM,B-Spec(ITD,ITJ,SM2,ST1,ITGT)#
Group 3	FF,CFF,FV,F600,FST
Group 4	SRF, SRF3(SREN)#
Group 5	STU, STL, SPU,GTL, GT1, GT2, GT3, GTX, SP, ITE, AS, T1, T2, GTA, EP,FP,HP,GT4,GT5,GTP,AGS,GTSC,ST4,ST3,ST2)#
	**Run groups may change based on actual entries.
	#Midwest Council Classes. Not eligible for SCCA GLDIV points.



South Bend Region, SCCA Present The Summer SpeedFest

Double Regional

Great Lakes Division

July 18-19, 2026(Saturday afternoon-Sunday)

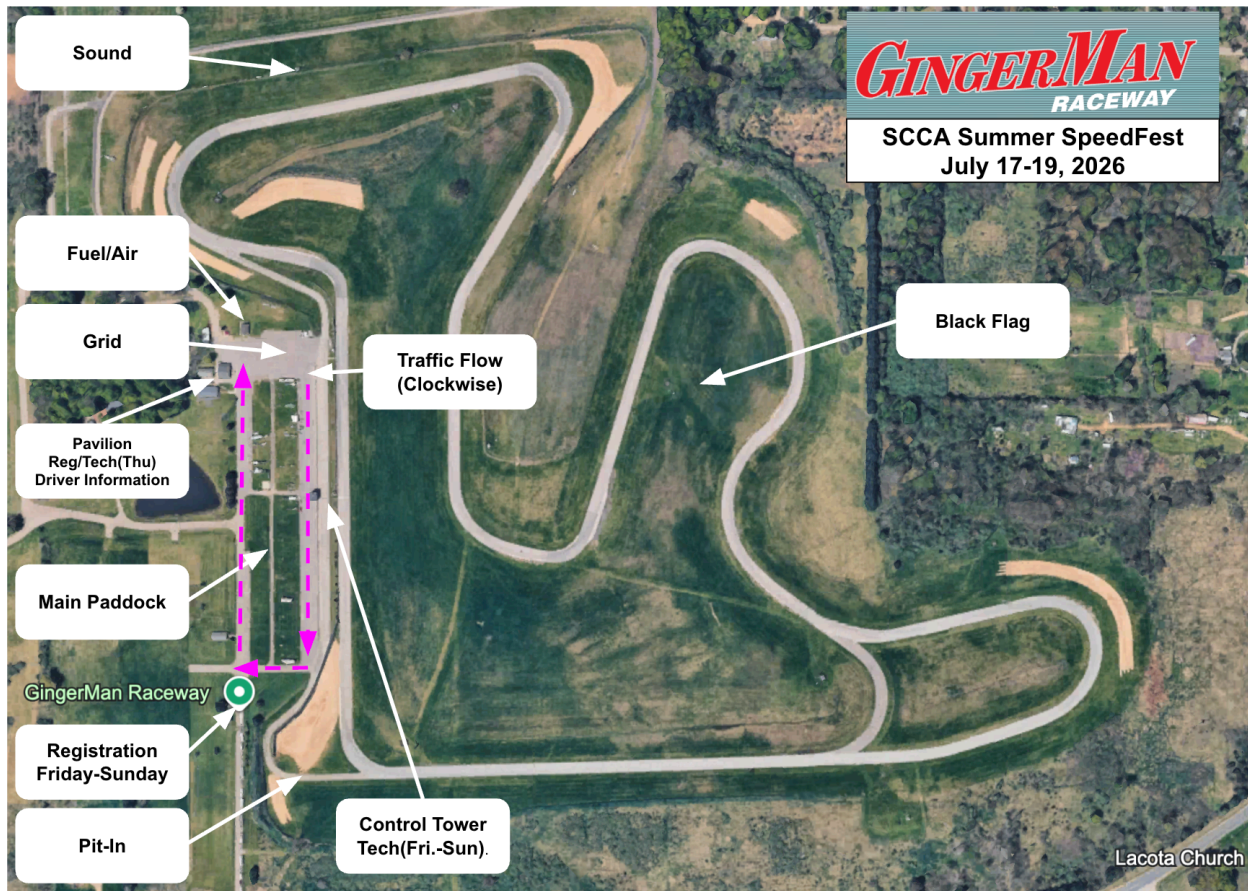
GingerMan Raceway | 2.14 Mile Road Course | Clockwise

Sanction# 26-R-66296



Event Officials

Event Chief Steward	Bryan Deane		
ACS – Safety		Chief Registrar	Marilyn Rusell
ACS - Tech		Chief of Tech	Rod Markowicz
Stewards of the Course		Paddock Marshall	TBD
ACS-Black Flag		Chief of Grid	Lynnette Markowicz
ACS		Chief of Pits	Duane Belisle
ACS		Chief of Timing/Scoring	Ken Braley
ACS		Chief of F&C	H.C. Colwell
SOM-Chair	James Suhr	Chief of Course	Steve Bollinger
SOM		Chief Starter	Bruce Beauvais
Fire & Rescue	Rescue Guys	Chief of Pace Car	Brian Tack
Wrecker Service	Harbor Towing	Chief of Sound Control	Stuart Laks
Pace Car	Provided by Campbell Ford	Medical	Life EMS
Driver Information	Kim Bollinger	Regional Executive	Dave Gushwa-SBR
Radios	Kim Bollinger		
Race Chair	Jim Krzyzewski/Dennis Jennings	Announcer	TBD





Revised 6/3/26