



Please read and comply with the following instructions so all may enjoy a smooth, trouble-free event.

All drivers must “check-in” prior to getting on track

Bring your valid driver's license and competition license, car logbook, Self Tech sheet completely filled out, and signed

On-Track Credentials - At check-in you will receive on-track credentials for registered/paid driver and car
*The Pit Marshal will not allow a driver or car on the course that does not have proper credentials. Credentials are nontransferable. Competition Licensed drivers only with Logbook and competition cars with logbook and full cage and safety equipment. Drivers must wear what they race in/full gear. Open passing.

1. **Driver Wristband--** to be worn on the left wrist to be **READILY** seen by the **Pit or Grid Marshal**
2. Car- assigned sticker on front left

Track conduct governed by Motorsport Solutions and Summit Point Motorsports Park and the Pit Marshal's judgment

No wheel to wheel or “mock” racing!!

You and your car Must be and remain compliant with ALL ***Event Requirements stated in your registration***

- No passengers. However recognized competition driving instructors in full gear are allowed
- Windows must be down unless they are fixed Lexan type, if the seat is occupied
- Sunroofs must be closed
- Hand-held recording devices of any kind may NOT be used
- The sound decibel limit for vehicles is 103. Sound levels will be monitored. Vehicles found to be over the limit will be asked to correct on the first offense, then not permitted to participate on subsequent offenses.
- No jacks or jack stands permitted on asphalt-paved surfaces, use of jacks with blocks or boards is allowed
- Every car must have front and rear tow hooks or other provisions to tow or lift.

If you break down on the course:

- Stay in your car unless the vehicle is on fire and signal to the course marshals a “thumbs down”
- If you must exit the car, stay in your car until all the cars have lapped once - about a minute and a half. Move quickly to a safe position behind a barrier remaining visible to a course marshal.
- At the end of the session, return to your car to assist the Flat Tow driver. All safety gear must be worn during flat tow.
 - * Apply light brake pressure to maintain tension on tow rope when being flat towed, *follow* the wrecker, be prepared to let go of the rope!
- If you are not with your car when the wrecker arrives, the car will be removed from the track and Summit Point Motorsports Park will not be held liable for any damage.
- No repairs to any car on the course.
- No service vehicles will be allowed on the course without the consent of the Pit Marshal.

Flags

- ❖ **Green-** Session is open. Displayed at Start/Finish
- ❖ **Yellow-Standing-** Caution-Danger ahead off paved surface, Slow
 - No passing until you reach the next manned flag station that is not displaying a Yellow Flag.
- ❖ **Yellow-Waving-** Great Caution-Danger ahead **ON** the paved surface, the track may be blocked, prepare to take evasive action
 - No passing until you reach the next manned flag station that is not displaying a Yellow Flag.
- ❖ **Yellow/Red Striped-** There is something **ON** the track ahead. It could cause damage, or loss of traction, oil, gas, water, gravel, sand, mud, rocks or some other debris on the track surface.
- ❖ **White-** Service vehicles or other slow-moving vehicles ahead on the track
- ❖ **Blue -** Check your mirrors, faster traffic is approaching, if safe and appropriate, give a point by, stay on line, use good track etiquette and get off the throttle
- ❖ **Black-Furled-** Conduct Warning -will only be displayed at Start/Finish and *Black Flag station pointed at you
- ❖ **Black-Open-** PIT-IN Consultation with Pit Marshal. Displayed at Start/Finish and Black Flag station pointed at you and may include a # board for mechanical or conduct issues.
 - The "Meatball" (*Black /Orange Ball*) flag may be used.
- ❖ **Black-Full Course-** ALL cars Pit-in. Displayed at all stations and may be waving
- ❖ **Red-Full Course-** All cars come to a **controlled STOP at the edge of the track but still on the surface with-in sight of a flag station (not in a place to blind other drivers). STAY PUT**, Await signal from a flag station Course Marshal. **This requires a high degree of situational awareness to avoid creating a secondary incident**
- ❖ **Checker-** Session is over -Pit-In. Displayed at Start/Finish.
 - Passing rules still in effect

*SPC Black Furled/Open, for equipment/conduct Flags will only be displayed at Start/Finish and Station 7

PASSING: It is the responsibility of the overtaking driver to move off line, pass, and move back on line within the allowed space. The lead driver always stays on line.

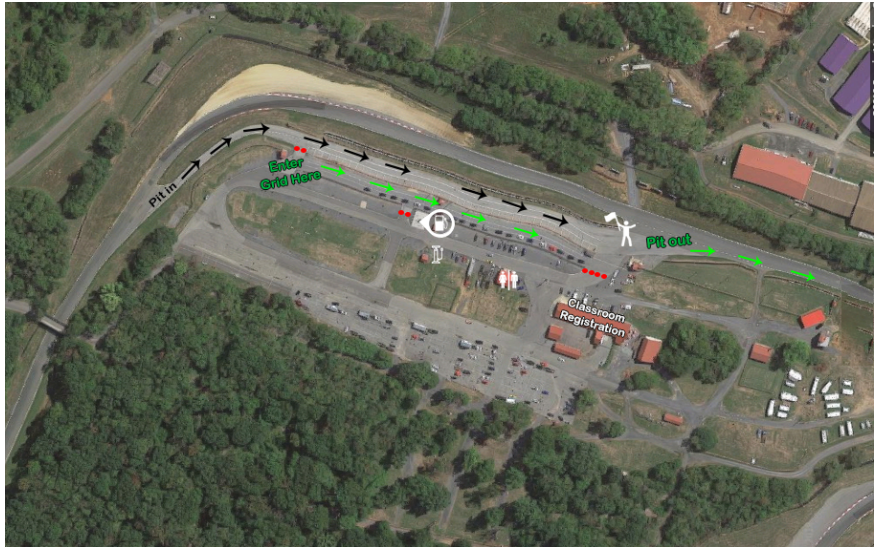
ALL drivers are expected to be **safe and courteous**

- Open passing may take place anywhere on course

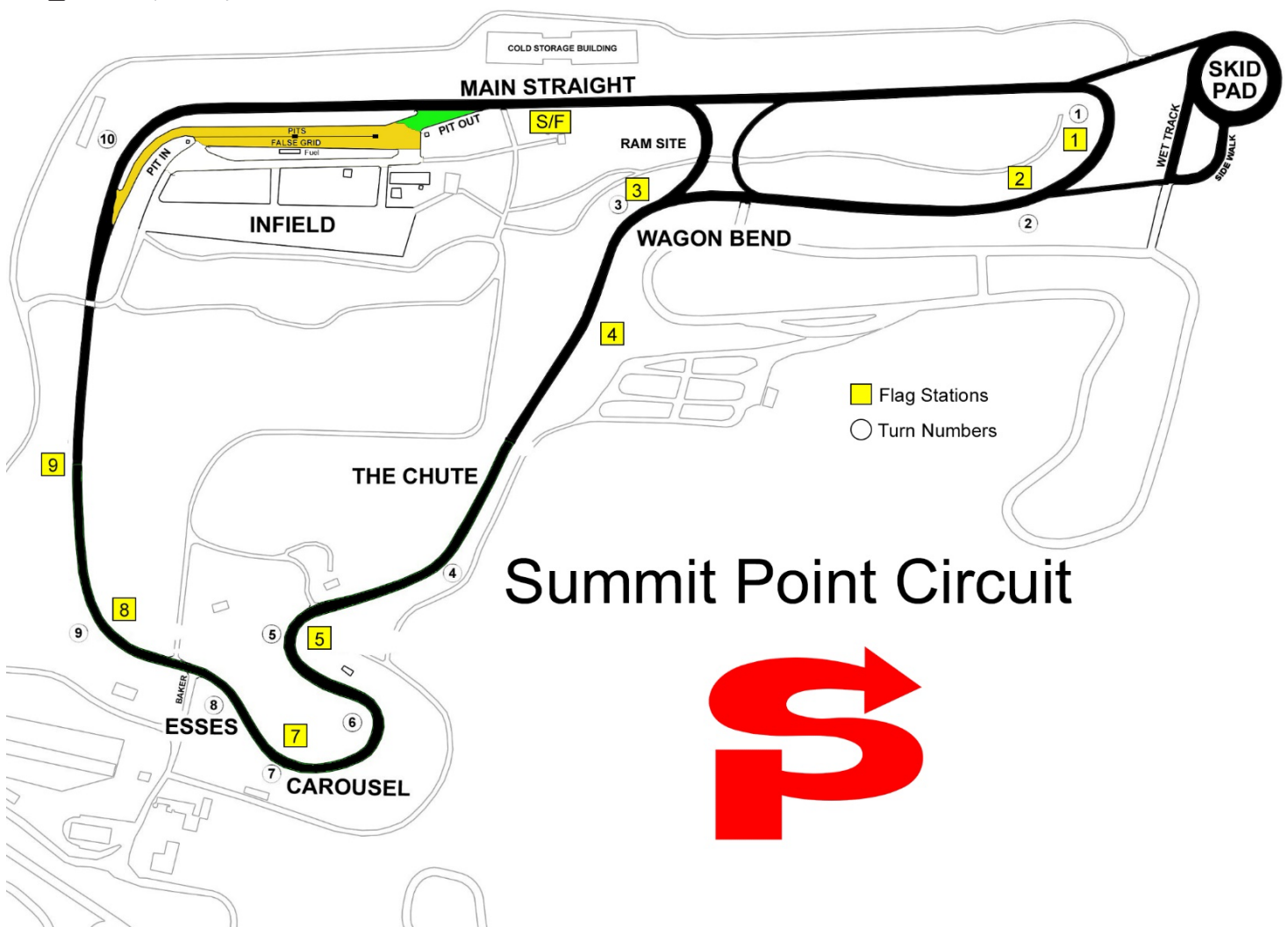
If you have any questions or are not sure if you should do something, talk to the Pit Marshal first located at pit-out

FALSE GRID, PIT-OUT, PIT-IN:

- ❖ Registered vehicles stage in the False Grid, present wristband, and enter the track on signal from the *Pit Marshal*
- ❖ All traffic is one way on *Pit Lane* and the *False Grid*.
- ❖ Cars exiting track(pitting-in) must be under control by the shutdown cones enter the *Paddock* by turning right at Pit-Out and drive slowly 5 mph through the paddock



THE BLEND LINE: Upon entering the track, drivers must stay right until the apex of turn one



Summit Point Circuit





Automated
Credit Card
Fuel Pumps
available all
day.

3 Group SCHEDULE

SUBJECT TO CHANGE

Listen to the PA for changes

Time	Group 1	Group 2	Group 3
7:00	Registration Opens		
8:15	Mandatory Driver's Meeting at Grid Out		
8:30-8:50	Track		
8:55-9:15		Track	
9:20-9:40			Track
10:00-10:20	Track		
10:40-11:00		Track	
11:05-11:25			Track
11:30-11:50	Track		
11:55-12:15		Track	
12:20-12:40			Track
12:40-1:45	Lunch		
1:30	FREE RAFFLE PRIZES AT GRID OUT		
1:50-2:10	Track		
2:15-2:35		Track	
2:40-3:00			Track
3:05-3:25	Track		
3:30-3:40			
3:45-4:05		Track	
4:10-4:30			Track
4:35 -5:00	Final Tune/Scuff up	Final Tune/Scuff up	Final Tune/Scuff up
5:30	COLD		



Car #

Self-Tech Form

Driver Name (Print): _____ Event Dates: _____

Co-Driver (Print): _____

Make & Model: _____ Year: _____ Color: _____

Pre-Event Inspection

(Initial by participant or shop)

ENGINE

Coolant hoses in good condition;
no visible leaks.

Drive belts tight, not frayed, and not
slipping (no squeal).

Wiring secure, not frayed or
exposed. Connections tight.

Steering and brake fluid reservoirs
clean and full.

Battery secure, cables tight.

Throttle travel free, throttle
return action strong.

No visible fuel or oil leaks.

BODY & LIGHTS

Brake lights and turn signals
operational (L, R, F, R).

Headlights (high/low) and tail lights
operational.

Windshield and mirrors not
cracked, clear and secure.

Doors, hood and trunk lids,
sun/moon roof; all secure.

Wipers operational, blades
Good.

INTERIOR

Seat belts functional. DOT
installed or properly installed 5 or 6
point harness.

Identical driver/passenger
restraints and seating safety level.

BRAKES & TIRES

Brake calipers and hydraulic
lines dry.

Brake pads and rotors above
wear limits.

Wheels not cracked, bent or out
of round.

Lug bolts checked and torqued
to specification.

Wheel bearings not loose.

Tires tread 2/32 min, with
acceptable wear pattern.

Brake pedal firm.

SUSPENSION

Suspension tight, Mounts
rust-free.

Minimal steering wheel play.

Shocks dry, bushings and tie
rod ends tight.

CV joints & hubs not binding.
Dust boots intact.

Exhaust system secure.

Helmet SA2010, or newer

Convertible roll-bar requirements:
OEM or aftermarket rollover protection
in all convertibles plus passes
broomstick test for seats that will be
occupied.

Event Day Verification

(Reviewed by participant)

ENGINE

No visible leaks.

Wiring secure, not frayed or exposed,
connections tight.

Steering and brake fluid reservoirs clean
and full.

Battery secure.

No visible fuel or oil leaks.

INTERIOR

Glove box and trunk empty. Spare tire
secure or removed.

Identical driver/passenger restraints and
seating safety level.

Remove all loose items/floor mats, check
under seats.

BRAKES & TIRES

All Lug bolts present.

SUSPENSION

Exhaust system secure.

MISC ITEMS

Helmet SA2010, or newer

Cameras and other devices
securely mounted.

All Pre-event items initialed.

Inspected By (Shop Name or Individual)

Inspector Signature (or Shop Stamp)

Date

Driver Certification: I certify that a qualified shop (strongly preferred) or competent individual has thoroughly inspected this vehicle using the above list and any other items necessary to ensure safety. I accept sole responsibility for the vehicle's safe operating condition. I agree to promptly cease operating the vehicle on track if I believe it becomes unsafe for any reason. If Pit Marshal and/or management remove your vehicle for safety concerns, the decision of is final.

Driver Signature: _____

Event Review Initials: _____

Co-Driver Signature _____