



The BERT Sprints
SCCA Majors Presented by Lane Automotive
 South Bend & Detroit Regions
 July 23-24, 2022
 GingerMan Raceway
 Sanction # 22-M-57313



SUPPLEMENTAL REGULATIONS

This event is governed by the 2022 General Competition Rules (GCR) and Category Specifications, as amended for 2022 per "FasTrack" and these Supplemental Regulations.

REGISTRATION: Drivers must register for the race online at www.motorsportreg.com. For registration questions, please contact the registrar Mary Shiloff at mshiloff@comcast.net

If you sign in at registration and do not go thru, or pass, Tech, you must notify the Chief of Registration, **BEFORE YOU LEAVE THE TRACK**, in order to receive your refund. See cancellation policy below. Phone/fax entries will not be accepted.

At-event Registration will be held in the Pavilion on Friday and the Registration building Saturday and Sunday.

ENTRY FEES (includes driver and up to 4 crew members):

Early Bird entry fee (before July 16, 2022)	\$515.
Entry fee (after July 16, 2022)	\$565.
Entry fee, 1 car-2 classes early bird (before July 16, 2022)	\$865.
Entry fee, 1 car-2 classes (after July 16, 2022)	\$935.
SCCA Compliance Fee-SM	\$20.
SCCA Compliance Fee-SRF3, FE2	\$30.
Runoffs Appearance Fund for Runoffs Eligible Classes	\$20
Dinner Fee (per person)	\$10

ENTRY FEE PAYMENT: Entry fee payments for online registrants not received by the Registrar by July 16, 2022 may result in a delay of processing your registration at the track.

Cancellation Fee Policy: A cancellation fee will not be assessed if the cancellation notice is made prior 11:59 pm on Wednesday, July 20, 2022. After that time, a \$50.00 cancellation fee will be assessed.

TECH: All drivers without a current year helmet sticker must present all driver gear as required by the GCR, vehicle logbook, and completed tech card to Tech. **If your car requires an annual tech OR you have Logbook notations you must bring the car to Tech. Contact Chief of Tech, Rod Markowicz, rodionjm@yahoo.com.** Annual Tech will be located in the lower level of the Timing and Communications Tower.

U.S. MAJORS TOUR EXPRESS TECH will also be available in the pavilion on Friday for those cardholders. Drivers that have a valid Annual Tech, 2022 Helmet sticker and no notations in their logbook will only need to bring their logbook and completed tech form to Express Tech or to Tech at the pavilion (Friday) or base of the tower (Saturday/Sunday) to receive their event "tech" sticker.

PASSES/WAIVERS: Each entry must list their crew members on the entry form. Each driver is allowed three free crew passes. All entrants/crew must either possess a SCCA Annual Waiver or sign the SpeedWaiver at the time of registration. (<https://sbrscca.speedwaiver.com/cljmj>). If the crew arrives outside of registration hours they must pay the spectator fee at the gate. The entry fee does NOT include Saturday evening dinner. Dinner tickets are \$10 each and must be paid for by July 17th. This helps the organizers order the proper amount of food and eliminates waste and expense.

SCCA members (non-participants) must present a valid membership card for admission. Workers and members are limited to one guest each. Worker license and membership card must be presented at registration. SCCA members, crew and guests who arrive outside of the posted hours of registration will be required to purchase a spectator pass to gain admission.

DRIVER ELIGIBILITY: Drivers must be a current member of the SCCA and hold a SCCA Full Competition license to participate in this event. If you do not have the proper credentials it is your responsibility to contact the Registrar prior to the event.

CAR ELIGIBILITY: Competition is open to all cars conforming to the GCR, as amended. All cars are required to use fully operational AMB transponders, and the driver is responsible for providing correct information to Timing & Scoring.

PREFERRED NUMBERS: Every effort will be made to honor Conference Preferred Numbers until 14 days prior to the event. Due to the make-up of the run groups, however, this may not be possible in all situations. If two drivers holding the same



Preferred Number request that number for the same run group, the number will be assigned to the driver with the earliest request.

AWARDS: Trophies for all races will be awarded in accordance with the GCR. Trophies will be presented at the event. Major's points will be awarded in accordance with the GCR. Trophies can be picked up at Driver Information.

DECALS: A U.S. Majors Tour decal must be displayed on both sides of all competition vehicles. Competition vehicles must also display the official Summit Racing Equipment SCCA Road Racing decal per GCR section 9.3.29.C (Fig. 3,4 & 5). Logos and decals of other sanctioning bodies shall be removed or covered (car and drivers suit). Decals will be provided free of charge and may be obtained at registration and/or tech.

CLASS DESIGNATION: Cars with multiple class designations on their sides must cover up or ~~strike through~~ the class they are NOT running. In other words, only the class being run in while on track shall be displayed.

IMPOUND: Saturday and Sunday races: The top three competitors in each class shall report to impound immediately following the completion of their race.

RACE LENGTH: Saturday races will be 15 laps or 25 minutes, whichever comes first. Sunday races will be 21 laps or 40 minutes, whichever comes first. Official clock will start when the green flag is shown and the lead car crosses the start/finish line. In the event of a "wave-off," the clock will still start.

ON COURSE DRIVER CONDUCT: Refer to GCR Section 6.11.1 E. The designated incident investigation site is located at the base of the tower in pit lane.

ENVIRONMENT: The SCCA South Bend Region and the Detroit Region, aim to provide an inclusive, welcoming environment for all participants. To that end, behaviors such as the following will be considered egregious examples of GCR 2.1.7, "Acting in an unsportsmanlike manner", and will be penalized as such.

- Discriminating against, disparaging or verbally abusing a participant because of their gender identity, ethnicity, marital status, sexual orientation, religion, age, or disability.
- Harassing, intimidating, threatening or bullying a participant.
- Doing any of the above outside the confines of an event in print or electronic media, in a way that affects that person's participation at an event.

NO DRONES! Please see GCR 2.2.6 Unmanned Aircraft Systems

SPEC MIATA COMPLIANCE: At post-race inspection, Spec Miata participants may be instructed by the designated Class Compliance Chief (CCC) to remove parts, including but not limited to the cylinder head, for disassembly and/or inspection. Competitors are responsible for performing required disassembly and/or reassembly of their car, as well as any resulting expenses incurred. The CCC will report any findings of non-compliance to the Chief Steward, who will then determine the need for a Chief Steward's Action (CSA) or Request for Action (RFA).

VICTORY LAPS: Due to time constraints there will be no victory laps.

SCALES: Will be available at Tech ½ hour after registration opens on Saturday and Sunday. Scales may be available for other participants during race impound, but priority will be given to impounded cars. Scales may be made available at other times at the discretion of the Chief of Tech. Scales are located at the base of the tower.

EVENT SCHEDULE/RUN GROUPS: The event schedule or run groups may only be changed at the discretion of the Chief Steward, with concurrence by the Event Chair, depending on pre-race entry counts or as needed to accommodate situations that may be encountered during the event. If changes are made prior to the start of the event, as much notice as possible will be given to all affected competitors. The schedule as published is for planning purposes only. Actual session start times may deviate from the published schedule based on actual event progression. Listen to the PA system and pay attention to what is happening on track. The PA is broadcast at 93.9 on your FM dial.



QUALIFYING: A driver not qualifying within the maximum of 115% of the recognized track record of their class must obtain permission from the Chief Steward in order to race. In the case of unusual circumstances, the Chief Steward can waive this rule for the entire event. See chart below:

CLASS	LAP RECORD	115%	CLASS	LAP RECORD	115%
FA	1:25.062	1:37.821	EP	1:38.660	1:53.459
FB	1:24.949	1:37.691	FP	1:41.379	1:56.585
FC	1:26.991	1:40.040	HP	1:44.713	2:03.727
FX	1:33.554	1:47.587	AS	1:38.124	1:52.843
FE2	1:29.532	1:42.962	STU	1:38.210	1:52.942
FF	1:34.570	1:48.756	T1	1:35.274	1:49.565
FM	1:33.554	1:47.587	T2	1:37.130	1:51.700
F5	1:32.274	1:46.115	T3	1:41.315	1:56.512
FV	1:40.899	1:56.022	T4	1:43.835	1:59.410
GTX	1:26.887	1:39.920	SM	1:44.327	1:59.976
GT1	1:26.887	1:39.920	B-SPEC	1:51.294	2:07.988
GT2	1:30.998	1:44.648	STL	1:41.380	1:56.587
GT3	1:34.129	1:48.248	PX	1:26.887	1:39.920
GTL	1:41.824	1:57.098	P1	1:27.005	1:40.056
SRF3	1:38.634	1:53.429	P2	1:26.710	1:39.717

VENDOR: Hoosier Tire Midwest-Plymouth will be servicing this event. In order to provide you with the best service possible we ask that you place a tire reservation. This will ensure that we will have the tires on hand at the event. Please contact Fred Awald to reserve your tires. f.awald1980@gmail.com or hoosiertireply@aol.com or call (574) 936-8344

LANE AUTOMOTIVE CONTINGENCY: Lane Automotive will provide a total of \$800.00 in product certificates for competitors displaying the "Lane Automotive" or "Allstar Performance" decals on each side of the car. Winners will be determined by random drawing. Decals must be displayed before Saturday's race in order to be eligible. Decals can be picked up at registration or Driver Information. Lane Automotive is located 30 minutes south of the track. Lane Automotive is a premier supplier of performance parts and accessories for racers, hot-rodders and off-road enthusiasts. They are open Monday through Friday from 9-6 pm. For more information go to: www.laneautomotive.com.

BLACK FLAG STATIONS: Black Flag Stations will be located at Turn #7 and the Starter's Stand. Drivers receiving a Black Flag will enter pit lane and proceed to the Black Flag station in front of the control tower.

GRID: Starting positions for the Saturday race will be determined by the fastest time recorded for each car during the Saturday qualifying session. *Starting positions for the Sunday race will be determined by the fastest time recorded for each car during any of the preceding qualifying session(s) or the fastest lap during the Saturday race.*

START/FINISH: The race will begin and end at the stripe in front of Timing and Scoring.

SPLIT STARTS: The Chief Steward will consider requests for split starts and may authorize split starts based on qualifying times. Requests must be received by 9:00 AM on July 23, 2022.

RADIO FREQUENCIES: South Bend Region operates on frequencies 151.625, 154.640, 154.600, 154.570, 464.500, and 456.800. The repeater receives on 152.870 and transmits on 159.615. These frequencies may be monitored but shall not be used for communication by any participant. No other radio frequencies may be transmitted from the tower due to the interference caused with the official track frequencies.

SOUND CONTROL: A maximum limit of 103 dB is in effect for this event. For your information, sound readings will be taken on driver's left between turns two and three and will be available in Driver Information.

DISABLED CARS: Disabled or damaged cars may be removed from the course and delivered to a central location. If the car has sustained body/chassis damage it will be released to the driver/crew after tech has made appropriate notations in the vehicle log book. Cars disabled due to a mechanical failure will be released to the driver/crew immediately. If the car



requires wrecker support to return to its paddock location, there may be a delay depending on the availability of wreckers or flat tows.

CLOTHING: Closed toed shoes are required on the grid and over the wall on pit lane. Crew members on pit lane must display their event credentials at all times while on pit lane.

PIT LANE: Pit lane speed shall not exceed 40 mph. Violators may be penalized.

PACE/SAFETY CAR: In addition to GCR 6.6.2, the field shall follow the PACE/SAFETY car as long as its emergency lights are flashing, even if it varies from the normal racecourse. In the event a full course yellow results in dispatch of the safety car, the safety car will enter the racing surface at pit out.

INSURANCE: Participant insurance will be provided in at least the minimum amounts required by the SCCA.

RESULTS: Live timing will be available during the event. Unless otherwise announced, live timing will be available via the Race Monitor App available for iPhone and Android phones. Qualifying, provisional and final results will be available at Driver Information. Drivers may obtain a copy of the final results at the driver's information tent at the north end of the paddock. Additionally, final results will be posted to the region's and SCCA Majors websites no later than 7 days following the completion of the event.

LAST LAP INDICATOR: Per the GCR the last lap indicator is a waving white flag.

SOCIAL EVENT: The Saturday evening social is free to all volunteers. Competitors and crew must purchase tickets in advance. COVID-19 situation may alter our plans to have a social event in 2022.

PADDOCK: The paddock opens at 3:00 pm on Thursday. All parking is first come first served with the exception of 14 spots with electric hookup (for a fee) and those needed by race officials and vendors. Contact track management at management@gingermanraceway.com to reserve spots with electric hookups. All competitors parked in the main paddock must use "pull-in" parking. Racecars may be parked on the asphalt extension of the inner-loop of the main paddock as long as a two-way traffic pattern is retained. No parking is allowed on the asphalt in the grid area located north of the main paddock and south of the bathrooms. Parking regulations are hereby incorporated in these regulations by reference. Failure to follow the direction of the Paddock Marshal or her/his designee regarding paddock parking or activities may result in expulsion from the facilities.

COURSE: GingerMan Raceway is a 2.14-mile road course, the event is being run on the "long" course.

PROVISIONS: Camping is allowed in the paddock on Thursday, Friday and Saturday nights. The cost is \$10.00 per person per night; children under 12 are free. Pets must be on leashes at all times and owners are responsible for any associated clean up. No pets allowed in the Park area around the pond and the pavilion. Water and electricity are available in limited areas of the paddock. Fuel will be available at the track as well as air and water.

TRACK RULES: Sale of products and services on track property is strictly prohibited without track management approval. The track property must be left clean. Waste oil must be put in the green tank located near the fuel pumps. No tires should be left on track property. The maximum speed limit in all areas except the racecourse is 10 MPH. The track will close at 8:00 PM on Sunday July 24, 2022. Arrangements must be made with track management if items are to be left until a later date. Race engines shall not be started or run between the hours of 6:30 PM and 7:00 AM each day and between 10:00 AM and noon on Sunday.

EMERGENCY CALLS: GingerMan has an emergency number at the track (269) 253-4445.

GENERAL RULES: ATV's, bicycles, motor scooters/cycles are permitted in the paddock provided they are used in a safe manner and operated ONLY by licensed drivers. Skateboards, skates, rollerblades, micro/mini racers and go-peds, hoverboards, and drones are NOT permitted. No person will be admitted into the raceway without the proper credentials. Absolutely NO bedding new brakes or testing of cars on infield roadways will be permitted. Violations will result in immediate ejection from the premises. This penalty will be enacted for all offenses, with zero tolerance.

ALCOHOL: Consumption of alcohol will not be allowed on track property prior to the final checkered flag of the day.

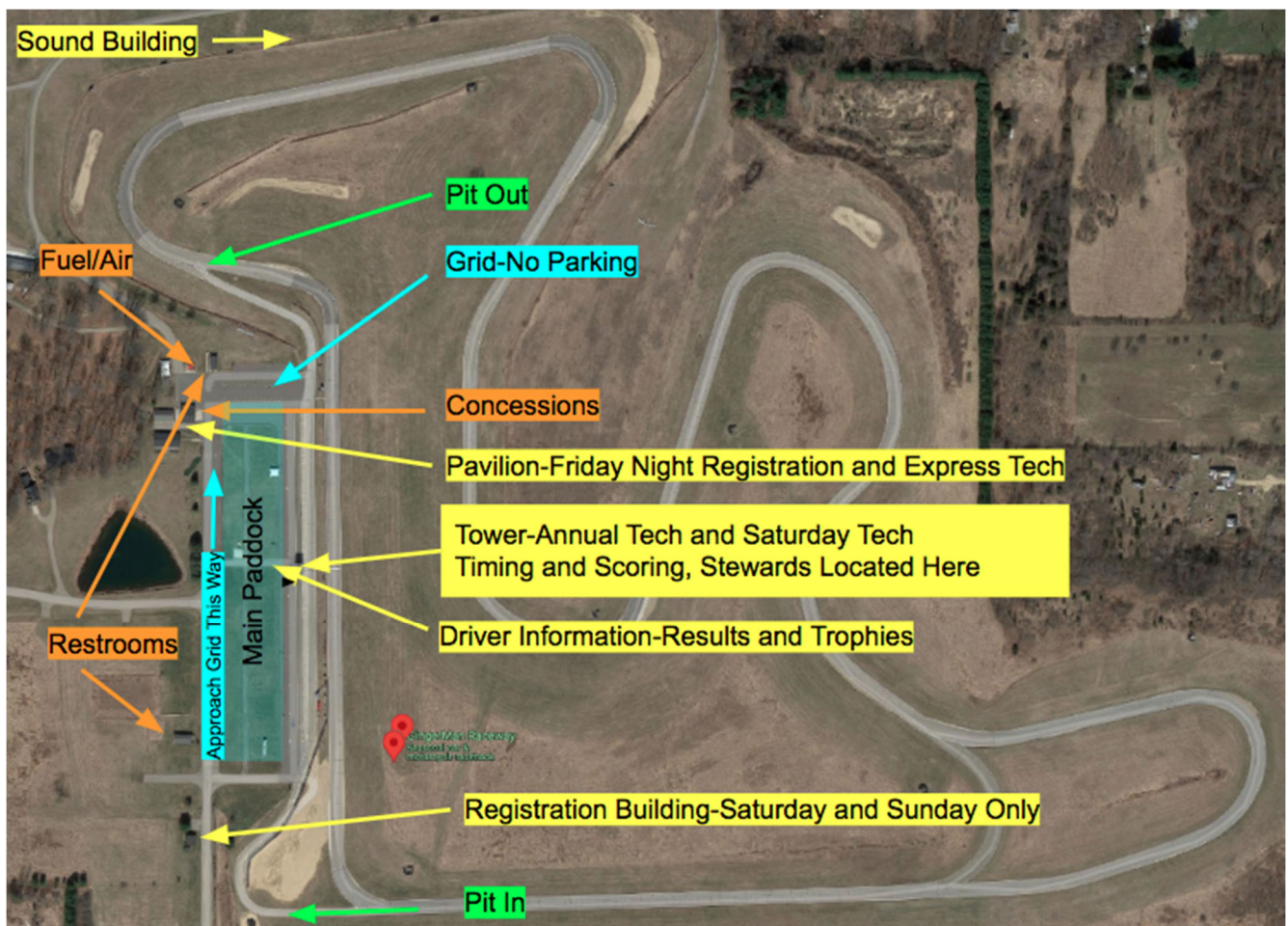
TEST DAY: Contact the track for test day information. <https://www.gingermanraceway.com/contact.html> This is NOT Sanctioned by the SCCA or the South Bend/Detroit Regions.

In light of the current COVID-19 situation, every attempt will be made to minimize the risk of exposure to the virus. We will follow the guidelines set forth by the state of Michigan.



EVENT OFFICIALS:

Event Chief Steward	Jerry Shiloff	Race Chair	Jeff Luckritz
ACS – Safety		Chief Registrar	Mary Shiloff
ACS - Tech		Chief of Tech	Rod Markowicz
ACS – Black Flag		Paddock Marshall	Tom Smolenski
ACS-Black Flag		Chief of Grid	Lynnette Markowicz
ACS		Chief of Pits	Duane Belisle
ACS		Chief of Timing/Scoring	Dave Ferris
ACS		Chief of F&C	Cindy Wisner
SOM-Chair	Dan Hodge	Chief of Course	Steve Bollinger
SOM		Chief Starter	Bobbe Orr
SOM		Chief of Pace Car	Brian Tack
Fire & Rescue	Rescue Guys	Chief of Sound Control	Stuart Laks
Wrecker Service	Harbor Towing	Medical	Medic1(ALS) and GMan(BLS)
Pace Car	Provided by Campbell Ford	Regional Executive	Mark Manninen-SBR
Driver Information	Kim Bollinger & Erika Engler		L. Frank Putman-DET
Radios	Kim Bollinger	Announcer	TBD



The BERT Sprints
SCCA Majors Presented by Lane Automotive
South Bend and Detroit Regions, SCCA
GingerMan Raceway
Schedule of Events

Friday, July 22, 2022

2:30-8:00 pm Registration/Express Tech at Pavilion
2:30-9:30 pm Annual Tech at base of Tower

Saturday, July 23, 2022

6:45-11:00 am Registration at the Gate
7:30 am Tech at the base of Tower
8:00 am Group 1 Qualifying (25 min)
Followed by Qualifying for Groups 2-6
Group 1 Race #1 (15 laps or 25 min)
~12:00 pm Lunch/Ferrari Charity Rides
1:00 pm Group 2 Race #1 (15 laps or 25 min)
Followed by Race #1 for Groups 3-6
Group 1 Qualifying (15 min)
Group 2 Qualifying (15 min)
~5:00 pm Cold Track

Sunday, July 24, 2022

6:45-11:00 am Registration at the Gate
7:30 am Tech at base of the Tower
8:15 am Group 3 Qualifying (15 min)
Followed by Qualifying for Groups 4-6
10 am-noon Quiet Time/Lunch
12:00 pm Group 1 Race #2 (21 laps or 40 min)
Followed by Race #2 for Groups 2-6
~5:00 pm Cold Track

PLEASE NOTE: Scheduled times are approximate and are for planning purposes only. Actual start times may vary. Stewards will NOT take action on MINOR schedule changes. Starting times may be altered with little/or no notice. Pay attention to on-track activities and listen to the PA.

Majors Run Groups

Group 1 SRF3
Group 2 SM, B-Spec
Group 3 F500, FF, FV
Group 4 FA,FC,FE2,FX,P1,P2
Group 5 GT1,GT2,GT3,GTX,T1,T2,T3,STU,AS,PX
Group 6 EP,FP,HP,GTL,T4,STL

Annual Tech Notes-Located at the base of the Tower. Please contact our Chief of Tech, Rod Markowicz to make an appointment. rodionjm@yahoo.com

